

# AKR1B10 Antibody

Catalog No: #36071

Package Size: #36071-1 50ul #36071-2 100ul

Orders: [order@signalwayantibody.com](mailto:order@signalwayantibody.com)Support: [tech@signalwayantibody.com](mailto:tech@signalwayantibody.com)

## Description

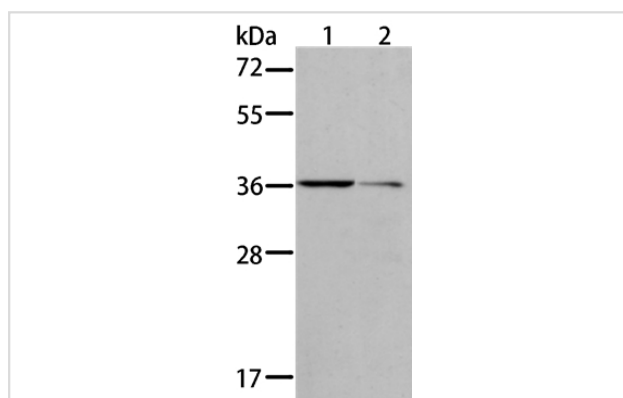
Product Name	AKR1B10 Antibody
Host Species	Rabbit
Clonality	Polyclonal
Purification	Antigen affinity purification.
Applications	WB IHC
Species Reactivity	Hu
Specificity	The antibody detects endogenous levels of total AKR1B10 protein.
Immunogen Type	Recombinant Protein
Immunogen Description	Full length fusion protein
Target Name	AKR1B10
Other Names	HIS; HSI; ARL1; ARL-1; ALDRLn; AKR1B11; AKR1B12
Accession No.	Swiss-Prot#: O60218NCBI Gene ID: 57016Gene Accssion: BC008837
SDS-PAGE MW	36kd
Concentration	0.7mg/ml
Formulation	Rabbit IgG in pH7.3 PBS, 0.05% NaN <sub>3</sub> , 50% Glycerol.
Storage	Store at -20°C

## Application Details

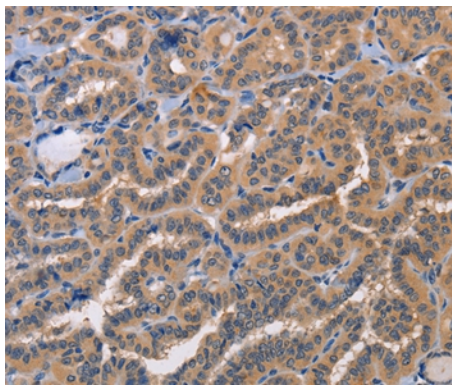
Western blotting: 1:200-1:1000

Immunohistochemistry: 1:25-1:100

## Images



Gel: 10%SDS-PAGE  
Lysates (from left to right): Raji and Jurkat cell  
Amount of lysate: 40ug per lane  
Primary antibody: 1/175 dilution  
Secondary antibody dilution: 1/8000  
Exposure time: 10 seconds



Immunohistochemical analysis of paraffin-embedded Human thyroid cancer tissue using #36071 at dilution 1/20.

## Background

This gene encodes a member of the aldo/keto reductase superfamily, which consists of more than 40 known enzymes and proteins. This member can efficiently reduce aliphatic and aromatic aldehydes, and it is less active on hexoses. It is highly expressed in adrenal gland, small intestine, and colon, and may play an important role in liver carcinogenesis.

Note: This product is for in vitro research use only and is not intended for use in humans or animals.