

## INSIG2 Antibody

Catalog No: #36556

Package Size: #36556-1 50ul #36556-2 100ul

Orders: [order@signalwayantibody.com](mailto:order@signalwayantibody.com)Support: [tech@signalwayantibody.com](mailto:tech@signalwayantibody.com)

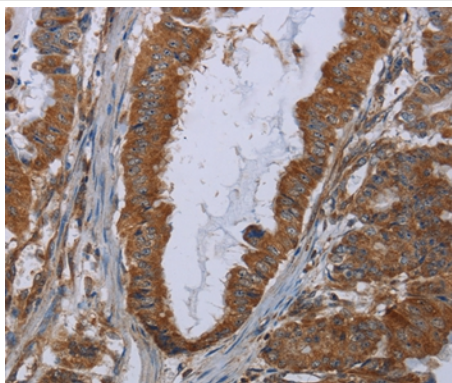
## Description

Product Name	INSIG2 Antibody
Host Species	Rabbit
Clonality	Polyclonal
Purification	Antigen affinity purification.
Applications	IHC
Species Reactivity	Hu
Specificity	The antibody detects endogenous levels of total INSIG2 protein.
Immunogen Type	Recombinant Protein
Immunogen Description	Fusion protein corresponding to a region derived from internal residues of human insulin induced gene 2
Target Name	INSIG2
Other Names	INSI2;INSIG2 membrane protein; insulin induced protein 2
Accession No.	Swiss-Prot#: Q9Y5U4NCBI Gene ID: 51141Gene Accssion: BC022475
Concentration	1.4mg/ml
Formulation	Rabbit IgG in pH7.3 PBS, 0.05% NaN <sub>3</sub> , 50% Glycerol.
Storage	Store at -20°C

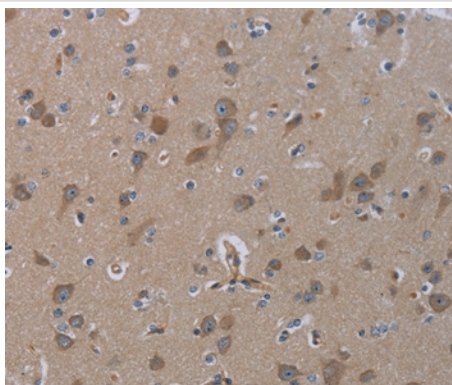
## Application Details

Immunohistochemistry: 1:25-1:100

## Images



Immunohistochemical analysis of paraffin-embedded Human esophagus cancer tissue using #36556 at dilution 1/30.



Immunohistochemical analysis of paraffin-embedded Human brain tissue using #36556 at dilution 1/30.

## Background

The protein encoded by this gene is highly similar to the protein product encoded by gene INSIG1. Both INSIG1 protein and this protein are endoplasmic reticulum proteins that block the processing of sterol regulatory element binding proteins (SREBPs) by binding to SREBP cleavage-activating protein (SCAP), and thus prevent SCAP from escorting SREBPs to the Golgi.

Note: This product is for in vitro research use only and is not intended for use in humans or animals.