

APAF1 Antibody

Catalog No: #36718



Package Size: #36718-1 50ul #36718-2 100ul

Orders: order@signalwayantibody.comSupport: tech@signalwayantibody.com

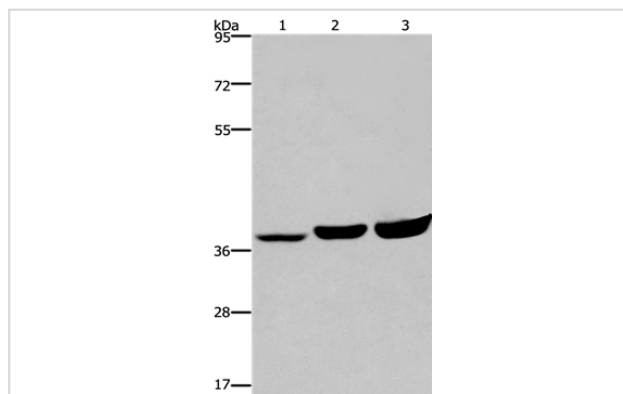
Description

Product Name	APAF1 Antibody
Host Species	Rabbit
Clonality	Polyclonal
Purification	Antigen affinity purification.
Applications	WB
Species Reactivity	Human;Mouse
Specificity	The antibody detects endogenous levels of total APAF1 protein.
Immunogen Type	Peptide
Immunogen Description	Synthetic peptide corresponding to residues near the C terminal of human Apoptotic protease-activating factor 1
Conjugates	Unconjugated
Target Name	APAF1
Other Names	CED4
Accession No.	Swiss-Prot#: O14727NCBI Gene ID: 317Gene Accssion: NP_863659
SDS-PAGE MW	38kd
Concentration	0.5mg/ml
Formulation	Rabbit IgG in pH7.3 PBS, 0.05% NaN ₃ , 50% Glycerol.
Storage	Store at -20°C

Application Details

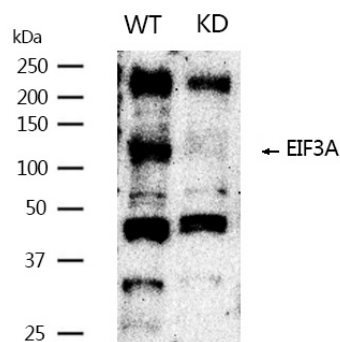
Western blotting: 1:200-1:1000

Images



Gel: 8%SDS-PAGE
Lysate: 30ug Hela cell
Primary antibody: 1/150 dilution
Secondary antibody dilution: 1/8000
Exposure time: 1 minute

Western blotting analysis using APAF1 Antibody #36718.



Background

This gene encodes a cytoplasmic protein that initiates apoptosis. This protein contains several copies of the WD-40 domain, a caspase recruitment domain (CARD), and an ATPase domain (NB-ARC). Upon binding cytochrome c and dATP, this protein forms an oligomeric apoptosome. The apoptosome binds and cleaves caspase 9 preproprotein, releasing its mature, activated form. Activated caspase 9 stimulates the subsequent caspase cascade that commits the cell to apoptosis. Alternative splicing results in several transcript variants encoding different isoforms.

Note: This product is for in vitro research use only and is not intended for use in humans or animals.