

RAC1 Antibody

Catalog No: #36742



Package Size: #36742-1 50ul #36742-2 100ul

Orders: order@signalwayantibody.comSupport: tech@signalwayantibody.com

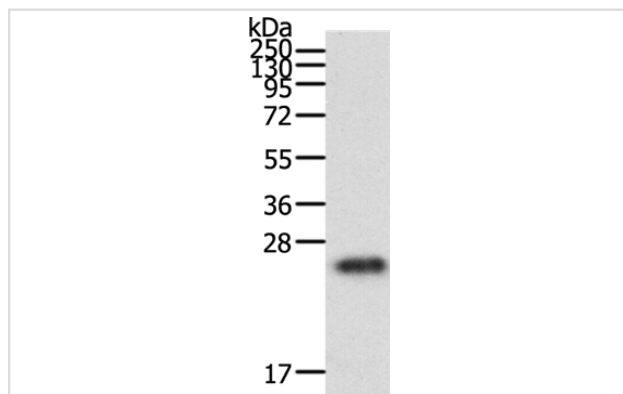
Description

Product Name	RAC1 Antibody
Host Species	Rabbit
Clonality	Polyclonal
Purification	Antigen affinity purification.
Applications	WB
Species Reactivity	Human;Mouse;Rat
Specificity	The antibody detects endogenous levels of total RAC1 protein.
Immunogen Type	Peptide
Immunogen Description	Synthetic peptide corresponding to a region derived from internal residues of human Ras-related C3 botulinum toxin substrate 1 (rho family, small GTP binding protein Rac1)
Conjugates	Unconjugated
Target Name	RAC1
Other Names	MIG5; Rac-1; TC-25; p21-Rac1
Accession No.	Swiss-Prot#: P63000NCBI Gene ID: 5879Gene Accssion: NP_061485
SDS-PAGE MW	23kd
Concentration	1mg/ml
Formulation	Rabbit IgG in pH7.3 PBS, 0.05% NaN ₃ , 50% Glycerol.
Storage	Store at -20°C

Application Details

Western blotting: 1:200-1:1000

Images



Gel: 12%SDS-PAGE
 Lysates (from left to right): Human fetal brain tissue
 Amount of lysate: 40ug per lane
 Primary antibody: 1/500 dilution
 Secondary antibody dilution: 1/8000
 Exposure time: 1 minute

Background

The protein encoded by this gene is a GTPase which belongs to the RAS superfamily of small GTP-binding proteins. Members of this superfamily

appear to regulate a diverse array of cellular events, including the control of cell growth, cytoskeletal reorganization, and the activation of protein kinases. Two transcript variants encoding different isoforms have been found for this gene.

Published Papers

el at., Nox4 is involved in high glucose-induced apoptosis in renal tubular epithelial cells via Notch pathway. In Mol Med Rep on 2017 Jun by Min Yao, Feng Gao, et al.. PMID: 28487945, (2017)

[PMID:28487945](#)

Note: This product is for in vitro research use only and is not intended for use in humans or animals.