

ANAPC4 Antibody

Catalog No: #37110



Package Size: #37110-1 50ul #37110-2 100ul

Orders: order@signalwayantibody.comSupport: tech@signalwayantibody.com

Description

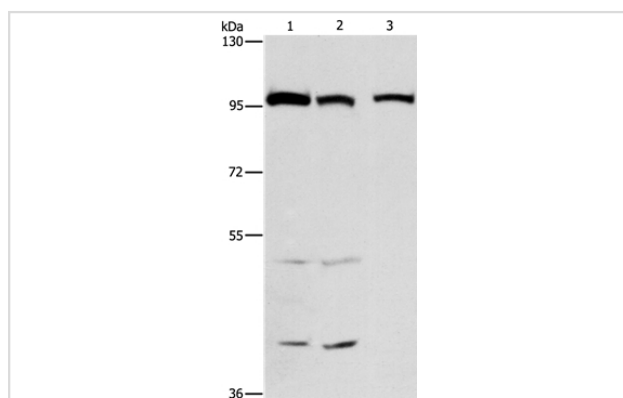
Product Name	ANAPC4 Antibody
Host Species	Rabbit
Clonality	Polyclonal
Purification	Antigen affinity purification.
Applications	WB IHC
Species Reactivity	Human;Mouse
Specificity	The antibody detects endogenous levels of total ANAPC4 protein.
Immunogen Type	Peptide
Immunogen Description	Synthetic peptide corresponding to a region derived from internal residues of human anaphase promoting complex subunit 4
Conjugates	Unconjugated
Target Name	ANAPC4
Other Names	APC4
Accession No.	Swiss-Prot#: Q9UJX5NCBI Gene ID: 29945Gene Accssion: NP_037499
SDS-PAGE MW	92kd
Concentration	2.6mg/ml
Formulation	Rabbit IgG in pH7.3 PBS, 0.05% NaN ₃ , 50% Glycerol.
Storage	Store at -20°C

Application Details

Western blotting: 1:200-1:1000

Immunohistochemistry: 1:50-1:200

Images



Gel: 6%SDS-PAGE

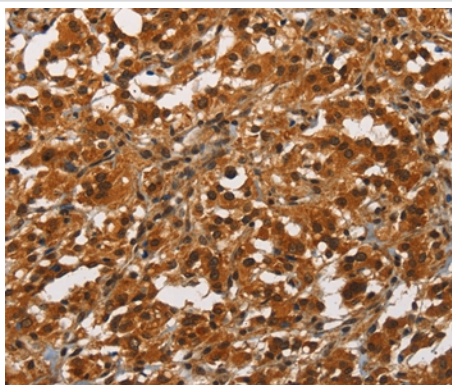
Lysates (from left to right): HepG2, 231 and hela cell

Amount of lysate: 40ug per lane

Primary antibody: 1/300 dilution

Secondary antibody dilution: 1/8000

Exposure time: 1 minute



Immunohistochemical analysis of paraffin-embedded Human thyroid cancer tissue using #37110 at dilution 1/50.

Background

A large protein complex, termed the anaphase-promoting complex (APC), or the cyclosome, promotes metaphase-anaphase transition by ubiquitinating its specific substrates such as mitotic cyclins and anaphase inhibitor, which are subsequently degraded by the 26S proteasome. Biochemical studies have shown that the vertebrate APC contains eight subunits. The composition of the APC is highly conserved in organisms from yeast to humans.?

Note: This product is for in vitro research use only and is not intended for use in humans or animals.