

## ITGA6 Antibody

Catalog No: #37155

Package Size: #37155-1 50ul #37155-2 100ul

Orders: [order@signalwayantibody.com](mailto:order@signalwayantibody.com)Support: [tech@signalwayantibody.com](mailto:tech@signalwayantibody.com)

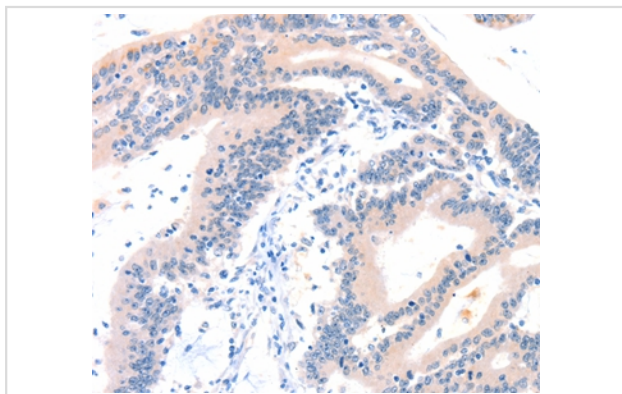
## Description

Product Name	ITGA6 Antibody
Host Species	Rabbit
Clonality	Polyclonal
Purification	Antigen affinity purification.
Applications	IHC
Species Reactivity	Human;Mouse
Specificity	The antibody detects endogenous levels of total ITGA6 protein.
Immunogen Type	Peptide
Immunogen Description	Synthetic peptide corresponding to a region derived from internal residues of human integrin, alpha 6
Conjugates	Unconjugated
Target Name	ITGA6
Other Names	CD49f; VLA-6; ITGA6B
Accession No.	Swiss-Prot#: P23229NCBI Gene ID: 3655Gene Accssion: NP_000201
Concentration	1.7mg/ml
Formulation	Rabbit IgG in pH7.3 PBS, 0.05% NaN <sub>3</sub> , 50% Glycerol.
Storage	Store at -20°C

## Application Details

Immunohistochemistry: 1:25-1:100

## Images



Immunohistochemical analysis of paraffin-embedded Human colon cancer tissue using #37155 at dilution 1/50.

## Background

The ITGA6 protein product is the integrin alpha chain alpha 6. Integrins are integral cell-surface proteins composed of an alpha chain and a beta chain. A given chain may combine with multiple partners resulting in different integrins. For example, alpha 6 may combine with beta 4 in the integrin referred to as TSP180, or with beta 1 in the integrin VLA-6. Integrins are known to participate in cell adhesion as well as cell-surface mediated

signalling. Two transcript variants encoding different isoforms have been found for this gene.

## Published Papers

---

Zeng Xu;Jiancheng Zheng;Ying Zhang;Huiqiao Wu;Bin Sun;Ke Zhang;Jianxi Wang;Fazhi Zang;Xingkai Zhang;Lei Guo;Xiaodong Wu et al., Increased Expression of Integrin Alpha 6 in Nucleus Pulposus Cells in Response to High Oxygen Tension Protects against Intervertebral Disc Degeneration, , (2021)

[PMID:34707783](#)

---

---

**Note:** This product is for in vitro research use only and is not intended for use in humans or animals.