

FZD10 Antibody

Catalog No: #37298



Package Size: #37298-1 50ul #37298-2 100ul

Orders: order@signalwayantibody.comSupport: tech@signalwayantibody.com

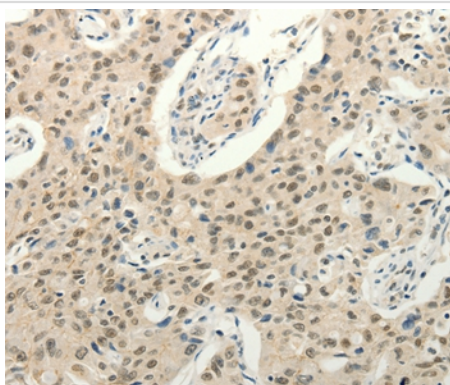
Description

Product Name	FZD10 Antibody
Host Species	Rabbit
Clonality	Polyclonal
Purification	Antigen affinity purification.
Applications	IHC
Species Reactivity	Human;Mouse
Specificity	The antibody detects endogenous levels of total FZD10 protein.
Immunogen Type	Peptide
Immunogen Description	Synthetic peptide corresponding to a region derived from internal residues of human frizzled family receptor 10
Conjugates	Unconjugated
Target Name	FZD10
Other Names	Fz10; FzE7; CD350; FZ-10; hFz10
Accession No.	Swiss-Prot#: Q9ULW2NCBI Gene ID: 11211Gene Accssion: NP_009128
Concentration	1.9mg/ml
Formulation	Rabbit IgG in pH7.3 PBS, 0.05% NaN ₃ , 50% Glycerol.
Storage	Store at -20°C

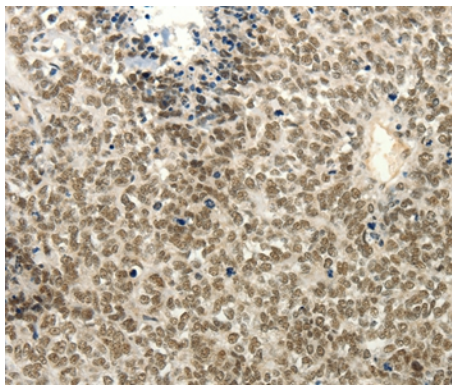
Application Details

Immunohistochemistry: 1:50-1:200

Images



Immunohistochemical analysis of paraffin-embedded Human lung cancer tissue using #37298 at dilution 1/50.



Immunohistochemical analysis of paraffin-embedded Human ovarian cancer tissue using #37298 at dilution 1/50.

Background

This gene is a member of the frizzled gene family. Members of this family encode 7-transmembrane domain proteins that are receptors for the Wingless type MMTV integration site family of signaling proteins. Most frizzled receptors are coupled to the beta-catenin canonical signaling pathway. Using array analysis, expression of this intronless gene is significantly up-regulated in two cases of primary colon cancer.

Published Papers

Zhao Ma;Qin Li;Peng Liu;Wei Dong;Ying Zuo et al., METTL3 regulates m6A in endometrioid epithelial ovarian cancer independently of METT14 and WTAP, , (2020)

[PMID:32869897](#)

Note: This product is for in vitro research use only and is not intended for use in humans or animals.