

## GNAT3 Antibody

Catalog No: #37600



Package Size: #37600-1 50ul #37600-2 100ul

Orders: [order@signalwayantibody.com](mailto:order@signalwayantibody.com)Support: [tech@signalwayantibody.com](mailto:tech@signalwayantibody.com)

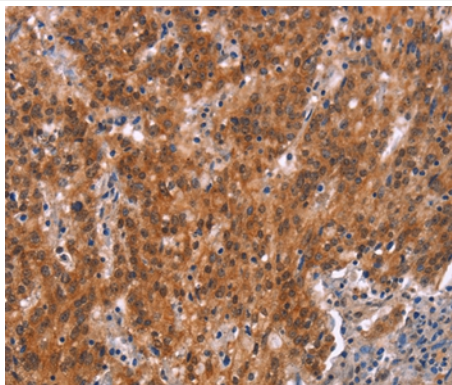
## Description

Product Name	GNAT3 Antibody
Host Species	Rabbit
Clonality	Polyclonal
Purification	Antigen affinity purification.
Applications	IHC
Species Reactivity	Human;Mouse;Rat
Specificity	The antibody detects endogenous levels of total GNAT3 protein.
Immunogen Type	Peptide
Immunogen Description	Synthetic peptide corresponding to residues near the N terminal of human guanine nucleotide binding protein, alpha transducing 3
Conjugates	Unconjugated
Target Name	GNAT3
Other Names	GDCA
Accession No.	Swiss-Prot#: A8MTJ3NCBI Gene ID: 346562Gene Accssion: NP_001095856
Concentration	1.4mg/ml
Formulation	Rabbit IgG in pH7.3 PBS, 0.05% NaN <sub>3</sub> , 50% Glycerol.
Storage	Store at -20°C

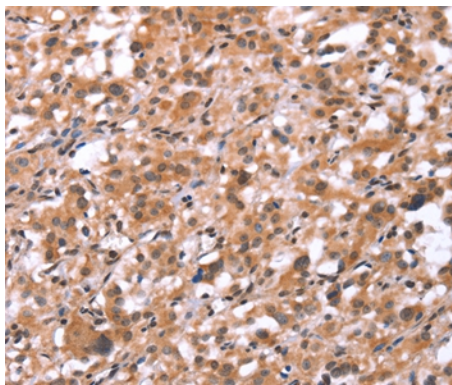
## Application Details

Immunohistochemistry: 1:25-1:100

## Images



Immunohistochemical analysis of paraffin-embedded Human gastric cancer tissue using #37600 at dilution 1/15.



Immunohistochemical analysis of paraffin-embedded Human thyroid cancer tissue using #37600 at dilution 1/15.

## Background

Guanine nucleotide-binding protein G(t) subunit alpha-3, also known as gustducin alpha-3 chain, is a protein that in humans is encoded by the GNAT3 gene. GNAT3 can functionally couple to taste receptors to transmit intracellular signal: receptor heterodimer TAS1R2/TAS1R3 senses sweetness and TAS1R1/TAS1R3 transduces umami taste, whereas the T2R family GPCRs act as bitter sensors.

Note: This product is for in vitro research use only and is not intended for use in humans or animals.