

DDB1 antibody

Catalog No: #38485

Package Size: #38485-1 50ul #38485-2 100ul

Orders: order@signalwayantibody.comSupport: tech@signalwayantibody.com

Description

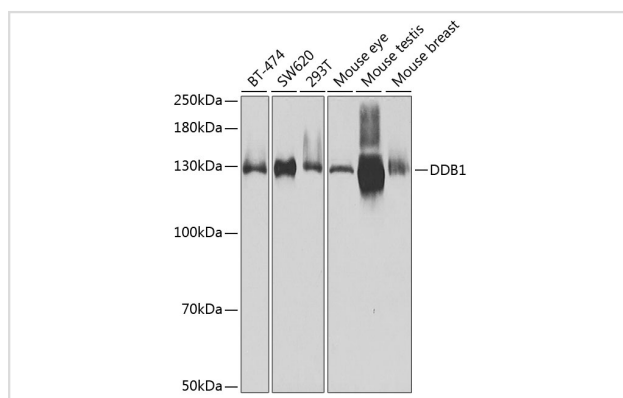
Product Name	DDB1 antibody
Host Species	Rabbit
Clonality	Polyclonal
Purification	Antibodies were purified by affinity purification using immunogen.
Applications	WB,IHC,IF
Species Reactivity	Human;Mouse;Rat
Specificity	The antibody detects endogenous level of total DDB1 protein.
Immunogen Type	Peptide
Immunogen Description	A synthetic peptide of human DDB1.
Conjugates	Unconjugated
Target Name	DDB1
Other Names	XPE;DDBA;XAP1;XPCE;XPE-BF;UV-DDB1;
Accession No.	Swiss-Prot#: Q16531NCBI Gene ID: 1642
SDS-PAGE MW	127kd
Concentration	1.0mg/ml
Formulation	Supplied at 1.0mg/mL in phosphate buffered saline (without Mg ²⁺ and Ca ²⁺), pH 7.4, 150mM NaCl, 0.02% sodium azide and 50% glycerol.
Storage	Store at -20°C

Application Details

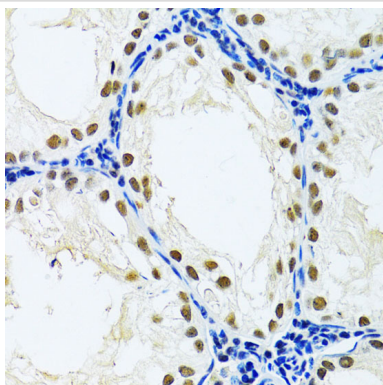
Western blotting: □1:500 - 1:1000

Immunohistochemistry: □1:50 - 1:100

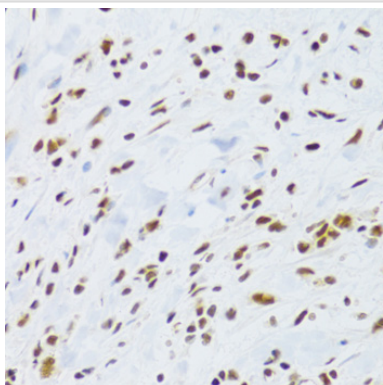
Images



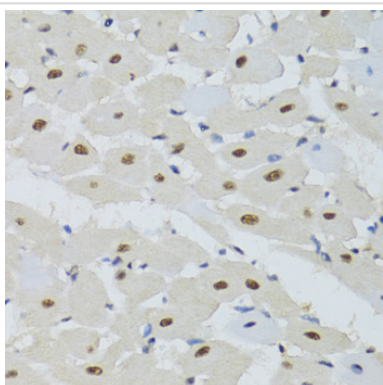
Western blot analysis of extracts of various cell lines, using DDB1 antibody at 1:500 dilution.



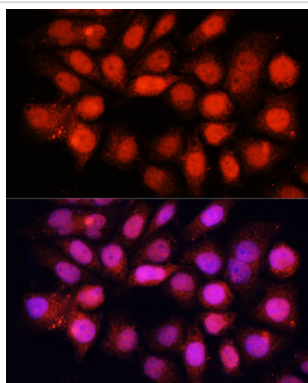
Immunohistochemistry of paraffin-embedded rat testis using DDB1 antibody at dilution of 1:100 (40x lens).



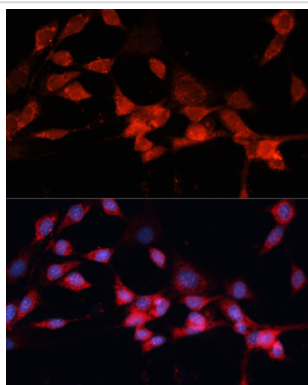
Immunohistochemistry of paraffin-embedded human gastric cancer using DDB1 antibody at dilution of 1:100 (40x lens).



Immunohistochemistry of paraffin-embedded mouse heart using DDB1 antibody at dilution of 1:100 (40x lens).



Immunofluorescence analysis of HeLa cells using DDB1 Polyclonal antibody at dilution of 1:100 (40x lens). Blue: DAPI for nuclear staining.



Immunofluorescence analysis of NIH-3T3 cells using DDB1 Polyclonal antibody at dilution of 1:100 (40x lens). Blue: DAPI for nuclear staining.

Background

The protein encoded by this gene is the large subunit (p127) of the heterodimeric DNA damage-binding (DDB) complex while another protein (p48) forms the small subunit. This protein complex functions in nucleotide-excision repair and binds to DNA following UV damage. Defective activity of this complex causes the repair defect in patients with xeroderma pigmentosum complementation group E (XPE) - an autosomal recessive disorder characterized by photosensitivity and early onset of carcinomas. However, it remains for mutation analysis to demonstrate whether the defect in XPE patients is in this gene or the gene encoding the small subunit. In addition, Best vitelliform macular dystrophy is mapped to the same region as this gene on 11q, but no sequence alternations of this gene are demonstrated in Best disease patients. The protein encoded by this gene also functions as an adaptor molecule for the cullin 4 (CUL4) ubiquitin E3 ligase complex by facilitating the binding of substrates to this complex and the ubiquitination of proteins.

Published Papers

Ye Liuqi;Lin Danlei;Zhang Wen;Chen Shiji;Zhen Yumiao;Akkouche Sara;Liang Xiaoxu;Chong Cheong-Meng;Zhong Hai-Jing; et al., AMBRA1 drives gastric cancer progression through regulation of tumor plasticity, , (2024)

PMID:

Note: This product is for in vitro research use only and is not intended for use in humans or animals.