

GSK3B antibody

Catalog No: #38616



Package Size: #38616-1 50ul #38616-2 100ul

Orders: order@signalwayantibody.comSupport: tech@signalwayantibody.com

Description

Product Name	GSK3B antibody
Host Species	Rabbit
Clonality	Polyclonal
Isotype	IgG
Purification	The antibody was affinity-purified from rabbit antiserum by affinity-chromatography using epitope-specific immunogen.
Applications	IF WB IHC IP
Species Reactivity	Human;Mouse;Rat
Specificity	The antibody detects endogenous level of total GSK3B protein.
Immunogen Type	Peptide
Immunogen Description	The antiserum was produced against synthesized peptide derived from human GSK3B.
Conjugates	Unconjugated
Target Name	GSK3B
Other Names	GSK3B;gsk-3
Accession No.	Uniprot:P49841GeneID:2932
SDS-PAGE MW	46kDa
Concentration	1.0mg/ml
Formulation	Liquid in PBS containing 50% glycerol, 0.5% BSA and 0.02% sodium azide.
Storage	Store at -20°C. Avoid freeze / thaw cycles.

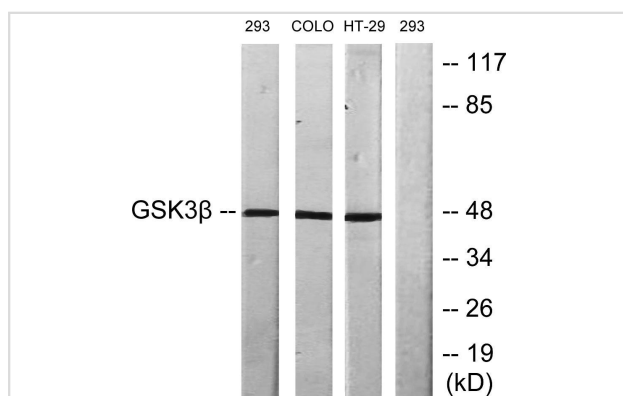
Application Details

IF 1:50-200

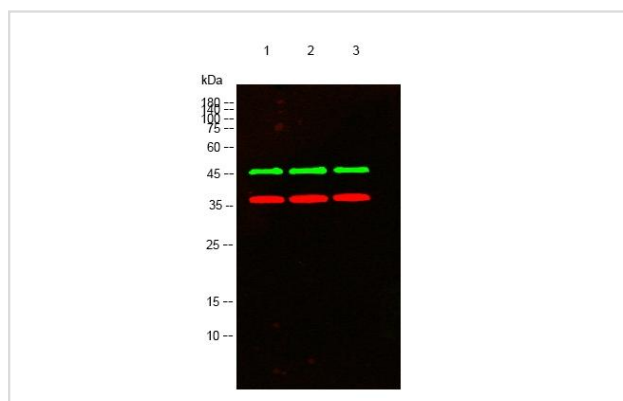
WB 1:500-1:2000

IHC 1:100-1:300

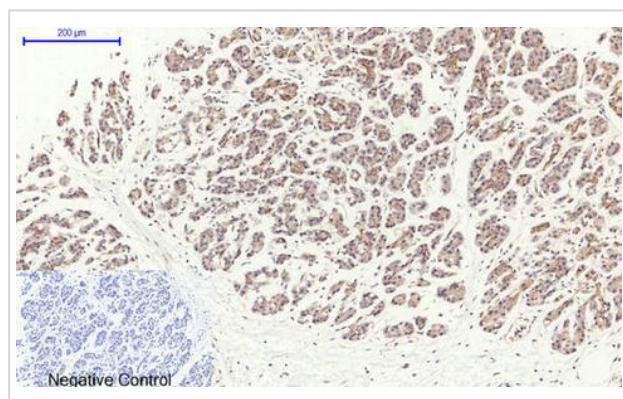
Images



Western blot analysis of lysates from 293, COLO205, and HT29 cells, using GSK3 beta Antibody. The lane on the right is blocked with the synthesized peptide.



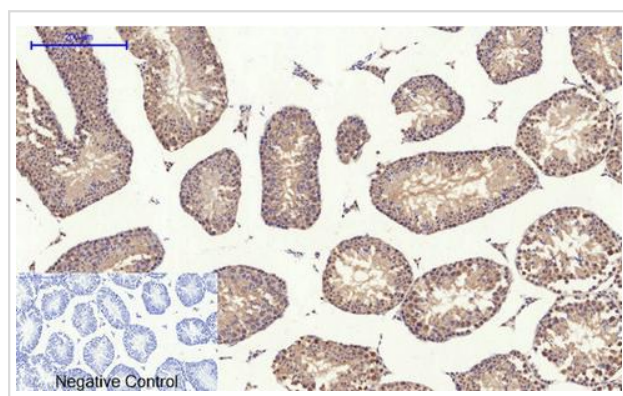
Western blot analysis of lysates from 1) 3T3, 2) HT29, 3) 293 cells, (Green) primary antibody was diluted at 1:1000 (Red) GAPDH antibody was diluted at 1:5000.



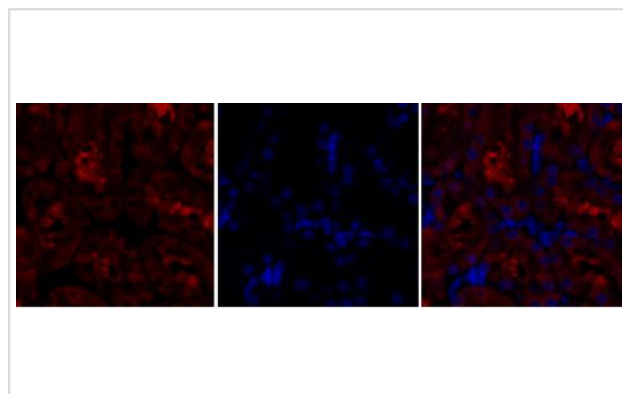
Immunohistochemical analysis of paraffin-embedded Human-stomach-cancer tissue. 1, GSK3β Polyclonal Antibody was diluted at 1:200 (4°C, overnight). 2, Sodium citrate pH 6.0 was used for antibody retrieval (>98°C, 20 min). 3, Secondary antibody was diluted at 1:200 (room temperature, 30 min). Negative control was used by secondary antibody only.



Immunohistochemical analysis of paraffin-embedded Rat-heart tissue. 1, GSK3β Polyclonal Antibody was diluted at 1:200 (4°C, overnight). 2, Sodium citrate pH 6.0 was used for antibody retrieval (>98°C, 20 min). 3, Secondary antibody was diluted at 1:200 (room temperature, 30 min). Negative control was used by secondary antibody only.



Immunohistochemical analysis of paraffin-embedded Mouse-testis tissue. 1, GSK3β Polyclonal Antibody was diluted at 1:200 (4°C, overnight). 2, Sodium citrate pH 6.0 was used for antibody retrieval (>98°C, 20 min). 3, Secondary antibody was diluted at 1:200 (room temperature, 30 min). Negative control was used by secondary antibody only.



Immunofluorescence analysis of rat-kidney tissue. 1, GSK3β Polyclonal Antibody (red) was diluted at 1:200 (4°C, overnight). 2, Cy3 labeled Secondary antibody was diluted at 1:300 (room temperature, 50 min). 3, Picture B: DAPI (blue) 10 min. Picture A: Target. Picture B: DAPI. Picture C: merge of A+B.

Background

The protein encoded by this gene is a serine-threonine kinase, belonging to the glycogen synthase kinase subfamily. It is involved in energy metabolism, neuronal cell development, and body pattern formation. Polymorphisms in this gene have been implicated in modifying risk of Parkinson disease, and studies in mice show that overexpression of this gene may be relevant to the pathogenesis of Alzheimer disease. Alternatively spliced transcript variants encoding different isoforms have been found for this gene.

Published Papers

Shuting Gao;Huihua Li;Zekun Li;Hong Wang;Xinyue Li;Shengyan Yang;Lin Huang;Baoping Zhang;Kailiang Zhang;James Kit Hon Tsoi;Jian He;Waruna Lakmal Dissanayaka et al., Multifunctional Injectable Bioadhesive with Toll-like Receptor 4 and Myeloid Differentiation Factor 2 Antagonistic Anti-inflammatory Potential for Periodontal Regeneration., , (2025)

[PMID:39951685](#)

Note: This product is for in vitro research use only and is not intended for use in humans or animals.