

DPEP1 antibody

Catalog No: #38797

Package Size: #38797-1 50ul #38797-2 100ul

Orders: order@signalwayantibody.comSupport: tech@signalwayantibody.com

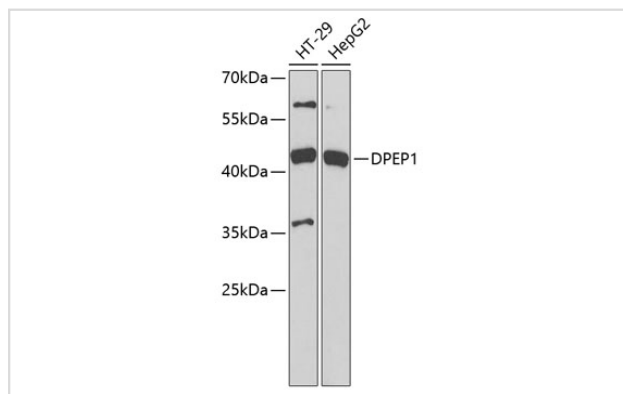
Description

Product Name	DPEP1 antibody
Host Species	Rabbit
Clonality	Polyclonal
Purification	Antibodies were purified by affinity purification using immunogen.
Applications	WB
Species Reactivity	Human;Mouse
Specificity	The antibody detects endogenous level of total DPEP1 protein.
Immunogen Type	Recombinant Protein
Immunogen Description	Recombinant protein of human DPEP1.
Conjugates	Unconjugated
Target Name	DPEP1
Other Names	MDP; RDP; MBD1;
Accession No.	Swiss-Prot#: P16444NCBI Gene ID: 1800
SDS-PAGE MW	45kd
Concentration	1.0mg/ml
Formulation	Supplied at 1.0mg/mL in phosphate buffered saline (without Mg ²⁺ and Ca ²⁺), pH 7.4, 150mM NaCl, 0.02% sodium azide and 50% glycerol.
Storage	Store at -20°C

Application Details

Western blotting: □1:500 - 1:2000

Images



Western blot analysis of extracts of various cell lines, using DPEP1 antibody at 1:1000 dilution.

Background

The protein encoded by this gene is a kidney membrane enzyme involved in the metabolism of glutathione and other similar proteins by dipeptide

hydrolysis. The encoded protein is known to regulate leukotriene activity by catalyzing the conversion of leukotriene D4 to leukotriene E4. This protein uses zinc as a cofactor and acts as a disulfide-linked homodimer. Two transcript variants encoding the same protein have been found for this gene.

Published Papers

el et al., Selection of a malignant subpopulation from a colorectal cancer cell line. In *Oncol Lett* on 2020 Sep by Pei-Lun Lai, Ting-Chun Chen, et al.. PMID:32782610, (2020)

[PMID:32782610](#)

Note: This product is for in vitro research use only and is not intended for use in humans or animals.