

PBX3 Antibody

Catalog No: #39322

Package Size: #39322 100ul

Orders: order@signalwayantibody.comSupport: tech@signalwayantibody.com

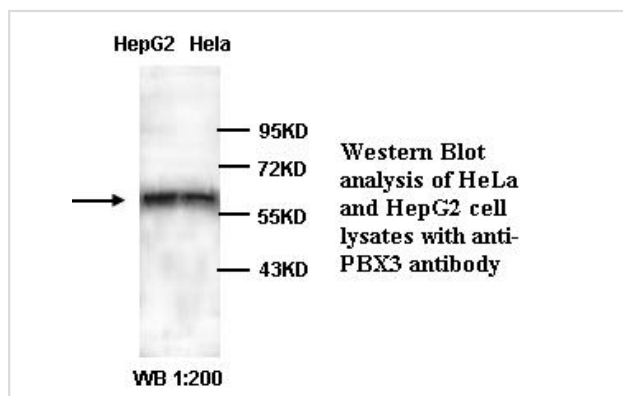
Description

Product Name	PBX3 Antibody
Host Species	Rabbit
Clonality	Polyclonal
Purification	Affinity purified
Applications	ELISA WB
Species Reactivity	Human;Mouse;Rat
Immunogen Type	Peptide-KLH
Immunogen Description	Rabbit polyclonal PBX3 antibody was raised against a 16 amino acid peptide corresponding to near the C terminal residues of Human PBX3.
Conjugates	Unconjugated
Target Name	PBX3
Concentration	1.0mg/ml
Formulation	PBS, pH 7.4 with 0.02% Sodium Azide
Storage	This product is stable for several weeks at 4°C as an undiluted liquid. Dilute only prior to immediate use. For extended storage, aliquot contents and freeze at -20°C or below. Avoid cycles of freezing and thawing. Expiration date is one (1) year from date of receipt.

Application Details

ELISA WB

Images



Published Papers

el et al., MicroRNA-497 suppresses cell proliferation and induces apoptosis through targeting PBX3 in human multiple myeloma. In Am J Cancer Res on 2016 Dec 1 by Tianhua Yu , Xuanhe Zhang et al.. PMID:28042507 , , (2016)

[PMID:28042507](https://pubmed.ncbi.nlm.nih.gov/28042507/)

Note: This product is for in vitro research use only and is not intended for use in humans or animals.