

# GGTLC1 Antibody

Catalog No: #40020

Package Size: #40020 100ul



Orders: [order@signalwayantibody.com](mailto:order@signalwayantibody.com)  
Support: [tech@signalwayantibody.com](mailto:tech@signalwayantibody.com)

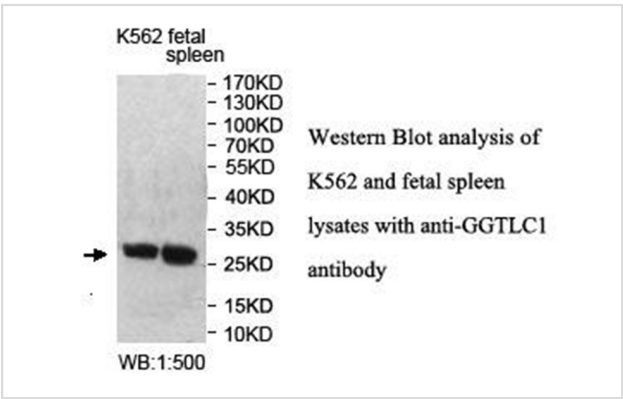
## Description

Product Name	GGTLC1 Antibody
Host Species	Rabbit
Clonality	Polyclonal
Purification	Affinity purified
Applications	ELISA WB IHC
Species Reactivity	Human;Mouse;Rat
Immunogen Type	Recombinant Protein
Immunogen Description	Rabbit polyclonal GGTLC1(1) antibody was raised against a recombinant human GGTLC1 protein 108-221aa(BC040904).
Conjugates	Unconjugated
Target Name	GGTLC1
Concentration	1.0mg/ml
Formulation	PBS, pH 7.4 with 0.02% sodium azide.
Storage	This product is stable for several weeks at 4°C as an undiluted liquid. Dilute only prior to immediate use. For extended storage, aliquot contents and freeze at -20°C or below. Avoid cycles of freezing and thawing. Expiration date is one (1) year from date of receipt.

## Application Details

ELISA: 1:20000-1:80000 WB: 1:200-1:1000 IHC: 1:100-1:500

## Images



## Published Papers

el at., GGTLC1 knockdown inhibits the progression of endometrial cancer by regulating the TGF-β/Smad signaling pathway. In Heliyon on 2024 May 25 by Xiaolin Tang, Xuehan Bi,et al..PMID:338841516, , (2024)

[PMID:338841516](https://pubmed.ncbi.nlm.nih.gov/338841516/)

---

Note: This product is for in vitro research use only and is not intended for use in humans or animals.