

## MAGEB2 Antibody

Catalog No: #40202



Package Size: #40202-1 50ul #40202-2 100ul

Orders: [order@signalwayantibody.com](mailto:order@signalwayantibody.com)Support: [tech@signalwayantibody.com](mailto:tech@signalwayantibody.com)

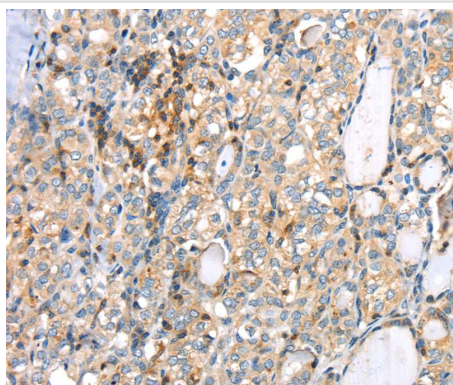
## Description

|                       |   |
|-----------------------|---|
| Product Name          | MAGEB2 Antibody   |
| Host Species          | Rabbit  |
| Clonality             | Polyclonal  |
| Purification          | Antigen affinity purification.  |
| Applications          | IHC   |
| Species Reactivity    | Hu  |
| Specificity           | The antibody detects endogenous levels of total MAGEB2 protein.                                       |
| Immunogen Type        | Peptide   |
| Immunogen Description | Synthetic peptide corresponding to residues near the N terminal of human melanoma antigen family B, 2 |
| Target Name           | MAGEB2  |
| Other Names           | DAM6; CT3.2; MAGE-XP-2  |
| Accession No.         | Swiss-Prot:O15479Gene Accssion:NP_002355  |
| Concentration         | 2.5mg/ml  |
| Formulation           | Rabbit IgG in pH7.4 PBS, 0.05% NaN <sub>3</sub> , 40% Glycerol.                                       |
| Storage               | Store at -20°C  |

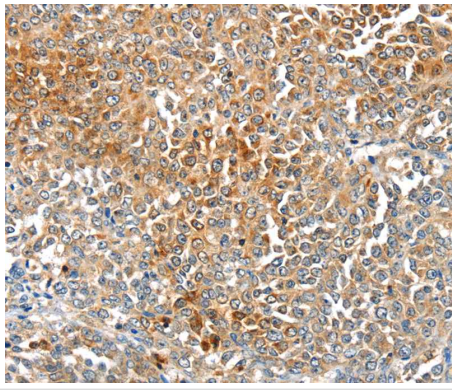
## Application Details

Immunohistochemistry:1:25-1:100

## Images



Immunohistochemical analysis of paraffin-embedded Human thyroid cancer tissue using #40202 at dilution 1/40.



Immunohistochemical analysis of paraffin-embedded Human ovarian cancer tissue using #40202 at dilution 1/40.

## Background

This gene is a member of the MAGEB gene family. The members of this family have their entire coding sequences located in the last exon, and the encoded proteins show 50 to 68% sequence identity to each other. The promoters and first exons of the MAGEB genes show considerable variability, suggesting that the existence of this gene family enables the same function to be expressed under different transcriptional controls. This gene is localized in the DSS (dosage-sensitive sex reversal) critical region. It is expressed in testis and placenta, and in a significant fraction of tumors of various histological types. The MAGEB genes are clustered on chromosome Xp22-p21.?

## Published Papers

et al., Establishment of cancer/testis antigen profiling based on clinicopathological characteristics in resected pathological stage III non-small cell lung cancer. In *Cancer Manag Res*. On 2018 Jul 16 by Jin S, Cao S et al.. PMID: 30038519, , (2018)

[PMID:30038519](#)

**Note:** This product is for in vitro research use only and is not intended for use in humans or animals.