

## ABCC9 Antibody

Catalog No: #40229



Package Size: #40229-1 50ul #40229-2 100ul

Orders: [order@signalwayantibody.com](mailto:order@signalwayantibody.com)Support: [tech@signalwayantibody.com](mailto:tech@signalwayantibody.com)

## Description

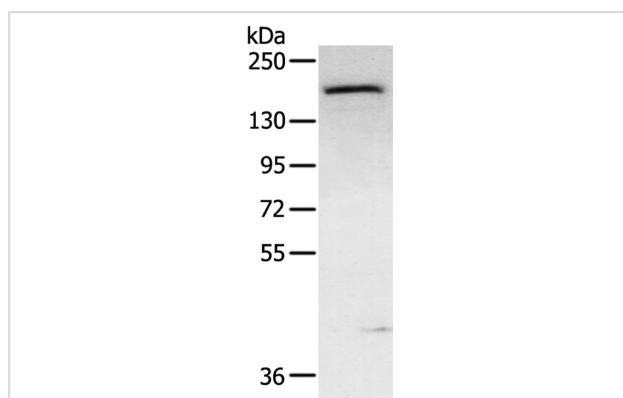
Product Name	ABCC9 Antibody
Host Species	Rabbit
Clonality	Polyclonal
Purification	Antigen affinity purification.
Applications	WB IHC
Species Reactivity	Human;Mouse;Rat
Specificity	The antibody detects endogenous levels of total ABCC9 protein.
Immunogen Type	Peptide
Immunogen Description	Synthetic peptide corresponding to residues near the C terminal of human ATP-binding cassette, sub-family C (CFTR/MRP), member 9
Conjugates	Unconjugated
Target Name	ABCC9
Other Names	SUR2; ABC37; CANTU; CMD10; ATFB12
Accession No.	Swiss-Prot:O60706Gene Accssion:NP_005682
SDS-PAGE MW	175KD
Concentration	1.1mg/ml
Formulation	Rabbit IgG in pH7.4 PBS, 0.05% NaN <sub>3</sub> , 40% Glycerol.
Storage	Store at -20°C

## Application Details

Western blotting: 1:200-1:1000

Immunohistochemistry: 1:100-1:200

## Images

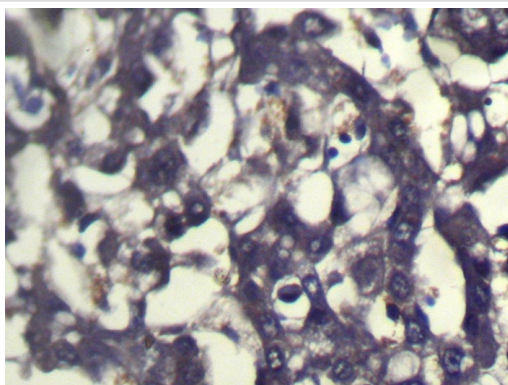


Gel: 6%SDS-PAGE

Lysate: 40ug Mouse bladder tissuePrimary antibody: 1/300 dilution

Secondary antibody dilution: 1/8000

Exposure time: 5 minutes



Immunohistochemical analysis of paraffin-embedded Human Liver cancer tissue using #40229 at dilution 1/100.

## Background

The protein encoded by this gene is a member of the superfamily of ATP-binding cassette (ABC) transporters. ABC proteins transport various molecules across extra- and intra-cellular membranes. ABC genes are divided into seven distinct subfamilies (ABC1, MDR/TAP, MRP, ALD, OABP, GCN20, White). This protein is a member of the MRP subfamily which is involved in multi-drug resistance. This protein is thought to form ATP-sensitive potassium channels in cardiac, skeletal, and vascular and non-vascular smooth muscle.?

Note: This product is for in vitro research use only and is not intended for use in humans or animals.