

Lamin B1 Monoclonal Antibody

Catalog No: #40413



Package Size: #40413-1 50ul #40413-2 100ul

Orders: order@signalwayantibody.comSupport: tech@signalwayantibody.com

Description

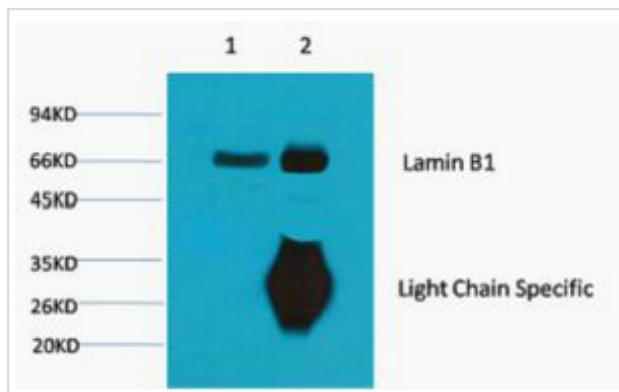
Product Name	Lamin B1 Monoclonal Antibody
Host Species	Mouse
Clonality	Monoclonal
Purification	The antibody was affinity-purified from antiserum by affinity-chromatography
Applications	WB IP
Species Reactivity	Human;Mouse;Rat
Specificity	The antibody detects endogenous Lamin B1 protein.
Conjugates	Unconjugated
Target Name	Lamin B1
Other Names	LMNB1; LMN2; LMNB; Lamin-B1
Accession No.	Swiss-Prot: P20700NCBI Gene ID: 4001
SDS-PAGE MW	68kd
Concentration	1mg/ml
Formulation	Liquid in PBS containing 50% glycerol, 0.5% BSA and 0.02% sodium azide.
Storage	Store at -20°C/1 year

Application Details

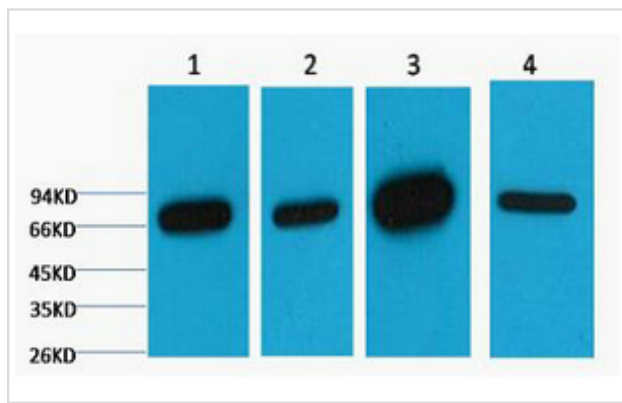
Western blotting: 1:2000-5000

Immunoprecipitation:1:200

Images



1) Input: Mouse Brain Tissue Lysate 2) IP product: IP dilute 1:200



Western blot analysis of 1) HepG2, 2) 293T, 3) Mouse Brain Tissue, 4) Rat Brain Tissue, diluted at 1:5000.

Published Papers

el at., mTOR may interact with PARP-1 to regulate visible light-induced parthanatos in photoreceptors. In *Cell Commun Signal* on 2020 Feb 17; by Pan YR, Song JY, et al..PMID:32066462, , (2020)

[PMID:32066462](#)

el at., NVD-BM-mediated genetic biosensor triggers accumulation of 7-dehydrocholesterol and inhibits melanoma via Akt1/NF- κ B signaling. In *Aging* (Albany NY) on 2020 Jul 25 by Jia Liu, Lei Cao, et al..PMID: 32712598, , (2020)

[PMID:32712598](#)

Note: This product is for in vitro research use only and is not intended for use in humans or animals.