

## ATP5A Polyclonal Antibody

Catalog No: #40628



Package Size: #40628-1 50ul #40628-2 100ul

Orders: [order@signalwayantibody.com](mailto:order@signalwayantibody.com)Support: [tech@signalwayantibody.com](mailto:tech@signalwayantibody.com)

## Description

Product Name	ATP5A Polyclonal Antibody
Host Species	Rabbit
Clonality	Polyclonal
Purification	The antibody was affinity-purified from rabbit antiserum by affinity-chromatography using epitope-specific immunogen.
Applications	WB IHC ELISA
Species Reactivity	Human;Mouse;Rat
Specificity	ATP5A Polyclonal Antibody detects endogenous levels of ATP5A protein.
Immunogen Type	peptide
Immunogen Description	Synthesized peptide derived from the Internal region of human ATP5A.
Conjugates	Unconjugated
Target Name	ATP5A
Other Names	ATP5A1; ATP5A; ATP5AL2; ATPM; ATP synthase subunit alpha; mitochondrial
Accession No.	Swiss-Prot: P25705NCBI Gene ID: 498
SDS-PAGE MW	60kd
Concentration	1mg/ml
Formulation	Liquid in PBS containing 50% glycerol, 0.5% BSA and 0.02% sodium azide.
Storage	Store at -20°C/1 year

## Application Details

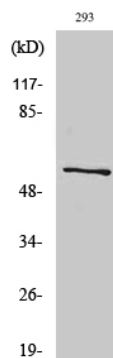
Western Blot: 1/500 - 1/2000.

Immunohistochemistry: 1/100 - 1/300.

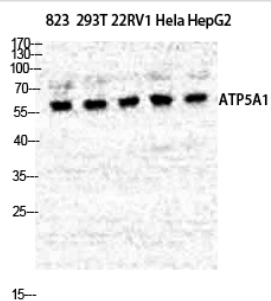
ELISA: 1/40000.

Not yet tested in other applications.

## Images



Western Blot analysis of RAW264.7 cells using ATP5A Polyclonal Antibody



Western Blot analysis of 823 293T 22RV1 Hela HepG2 cells using ATP5A Polyclonal Antibody

Note: This product is for in vitro research use only and is not intended for use in humans or animals.