

CD284 Polyclonal Antibody

Catalog No: #40697



Package Size: #40697-1 50ul #40697-2 100ul

Orders: order@signalwayantibody.com
Support: tech@signalwayantibody.com

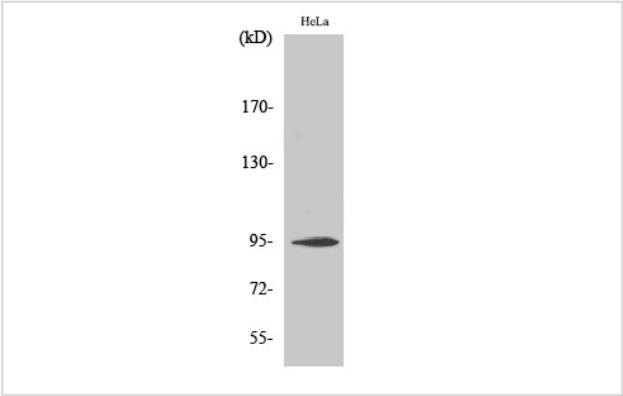
Description

Product Name	CD284 Polyclonal Antibody
Host Species	Rabbit
Clonality	Polyclonal
Purification	The antibody was affinity-purified from rabbit antiserum by affinity-chromatography using epitope-specific immunogen.
Applications	WB;IHC;IF;ELISA
Species Reactivity	Human;Mouse
Specificity	CD284 Polyclonal Antibody detects endogenous levels of CD284 protein.
Immunogen Type	peptide
Immunogen Description	Synthesized peptide derived from the Internal region of human CD284.
Conjugates	Unconjugated
Target Name	CD284
Other Names	TLR4; Toll-like receptor 4; hToll; CD antigen CD284
Accession No.	Swiss-Prot: O00206NCBI Gene ID: 7099
SDS-PAGE MW	95kd
Concentration	1mg/ml
Formulation	Liquid in PBS containing 50% glycerol, 0.5% BSA and 0.02% sodium azide.
Storage	Store at -20°C/1 year

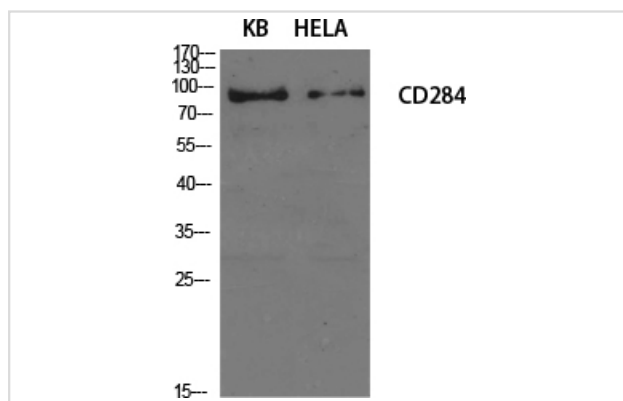
Application Details

WB 1:500-1:2000;
IHC 1:100-1:300;
IF 1:50-200;
ELISA 1:40000;

Images



Western Blot analysis of COLO205 cells using CD284 Polyclonal Antibody



Western Blot analysis of KB HELA cells using CD284 Polyclonal Antibody

Note: This product is for in vitro research use only and is not intended for use in humans or animals.