

GPR158 Polyclonal Antibody

Catalog No: #40977



Package Size: #40977-1 50ul #40977-2 100ul

Orders: order@signalwayantibody.comSupport: tech@signalwayantibody.com

Description

Product Name	GPR158 Polyclonal Antibody
Host Species	Rabbit
Clonality	Polyclonal
Purification	The antibody was affinity-purified from rabbit antiserum by affinity-chromatography using epitope-specific immunogen.
Applications	WB IHC IF ELISA
Species Reactivity	Human;Mouse
Specificity	GPR158 Polyclonal Antibody detects endogenous levels of GPR158 protein.
Immunogen Type	peptide
Immunogen Description	Synthesized peptide derived from the N-terminal region of human GPR158.
Conjugates	Unconjugated
Target Name	GPR158
Other Names	GPR158; KIAA1136; Probable G-protein coupled receptor 158
Accession No.	Swiss-Prot: Q5T848NCBI Gene ID: 57512
SDS-PAGE MW	150kd
Concentration	1mg/ml
Formulation	Liquid in PBS containing 50% glycerol, 0.5% BSA and 0.02% sodium azide.
Storage	Store at -20°C/1 year

Application Details

Western Blot: 1/500 - 1/2000.

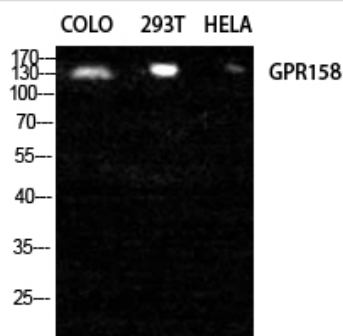
Immunohistochemistry: 1/100 - 1/300.

Immunofluorescence: 1/200 - 1/1000.

ELISA: 1/5000.

Not yet tested in other applications.

Images



Western Blot analysis of COLO 293T HELA cells using GPR158 Polyclonal Antibody

Note: This product is for in vitro research use only and is not intended for use in humans or animals.