

## Granzyme K Polyclonal Antibody

Catalog No: #40985



Package Size: #40985-1 50ul #40985-2 100ul

Orders: [order@signalwayantibody.com](mailto:order@signalwayantibody.com)Support: [tech@signalwayantibody.com](mailto:tech@signalwayantibody.com)

## Description

|                       |   |
|-----------------------|---|
| Product Name          | Granzyme K Polyclonal Antibody  |
| Host Species          | Rabbit  |
| Clonality             | Polyclonal  |
| Purification          | The antibody was affinity-purified from rabbit antiserum by affinity-chromatography using epitope-specific immunogen. |
| Applications          | WB IHC IF ELISA   |
| Species Reactivity    | Human;Mouse;Rat   |
| Specificity           | Granzyme K Polyclonal Antibody detects endogenous levels of Granzyme K protein.                                       |
| Immunogen Description | Synthesized peptide derived from the Internal region of human Granzyme K.   |
| Conjugates            | Unconjugated  |
| Target Name           | Granzyme K  |
| Other Names           | GZMK; TRYP2; Granzyme K; Fragmentin-3; Granzyme-3; NK-tryptase-2; NK-Tryp-2   |
| Accession No.         | Swiss-Prot: P49863NCBI Gene ID: 3003  |
| SDS-PAGE MW           | 33kd  |
| Concentration         | 1mg/ml  |
| Formulation           | Liquid in PBS containing 50% glycerol, 0.5% BSA and 0.02% sodium azide.   |
| Storage               | Store at -20°C/1 year   |

## Application Details

Western Blot: 1/500 - 1/2000.

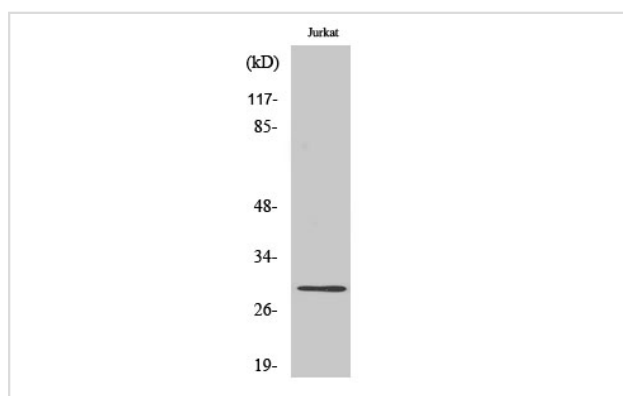
Immunohistochemistry: 1/100 - 1/300.

Immunofluorescence: 1/200 - 1/1000.

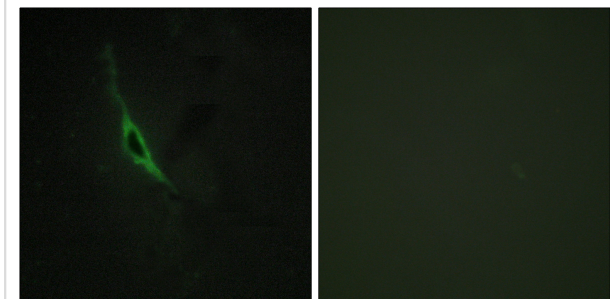
ELISA: 1/20000.

Not yet tested in other applications.

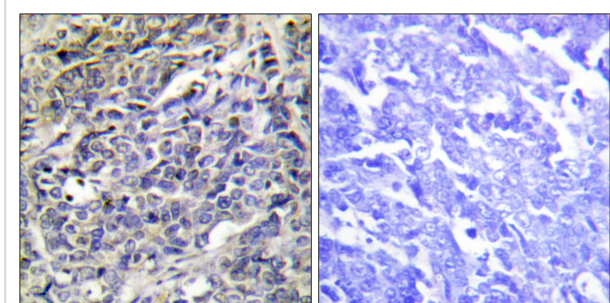
## Images



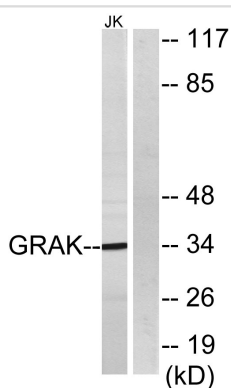
Western Blot analysis of Jurkat cells using Granzyme K Polyclonal Antibody



Immunofluorescence analysis of NIH/3T3 cells, using GRAK Antibody. The picture on the right is blocked with the synthesized peptide.



Immunohistochemistry analysis of paraffin-embedded human lung carcinoma tissue, using GRAK Antibody. The picture on the right is blocked with the synthesized peptide.



Western blot analysis of lysates from Jurkat cells, using GRAK Antibody. The lane on the right is blocked with the synthesized peptide.

## Published Papers

el at., Longitudinal plasma proteome profiling reveals the diversity of biomarkers for diagnosis and cetuximab therapy response of colorectal cancer. In Nat Commun on 2024 Feb 1 by Yan Li, Bing Wang,et al..PMID:38302471, , (2024)

[PMID:38302471](https://pubmed.ncbi.nlm.nih.gov/38302471/)

Note: This product is for in vitro research use only and is not intended for use in humans or animals.