

Histone H2B Polyclonal Antibody

Catalog No: #41015

Package Size: #41015-1 50ul #41015-2 100ul

Orders: order@signalwayantibody.comSupport: tech@signalwayantibody.com

Description

Product Name	Histone H2B Polyclonal Antibody
Host Species	Rabbit
Clonality	Polyclonal
Purification	The antibody was affinity-purified from rabbit antiserum by affinity-chromatography using epitope-specific immunogen.
Applications	WB IHC ELISA
Species Reactivity	Human;Mouse
Specificity	Histone H2B Polyclonal Antibody detects endogenous levels of Histone H2B protein.
Immunogen Type	peptide
Immunogen Description	Synthesized peptide derived from human Histone H2B around the non-acetylation site of K15.
Conjugates	Unconjugated
Target Name	Histone H2B
Other Names	H2BFS; Histone H2B type F-S; Histone H2B.s; H2B/s
Accession No.	Swiss-Prot: P57053NCBI Gene ID: 54145
SDS-PAGE MW	20kd
Concentration	1mg/ml
Formulation	Liquid in PBS containing 50% glycerol, 0.5% BSA and 0.02% sodium azide.
Storage	Store at -20°C/1 year

Application Details

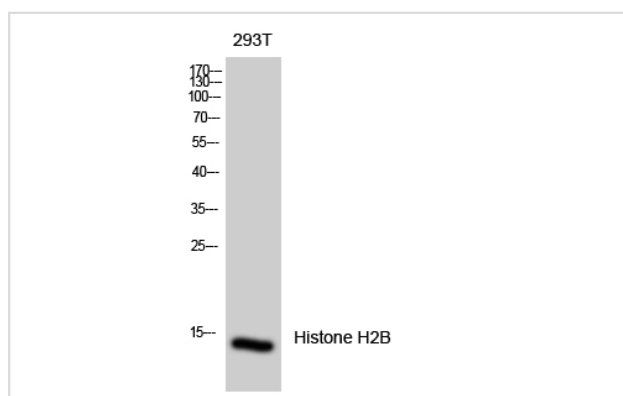
Western Blot: 1/500 - 1/2000.

Immunohistochemistry: 1/100 - 1/300.

ELISA: 1/10000.

Not yet tested in other applications.

Images



Western Blot analysis of 293T cells using Histone H2B Polyclonal Antibody

Published Papers

el at., RNF8 Mediates Histone H3 Ubiquitylation and Promotes Glycolysis and Tumorigenesis.In J Exp Med on 2017 Jun 5 by Yan Xia , Weiwei Yang,et al..PMID: 28507061, , (2017)

[PMID:28507061](#)

Note: This product is for in vitro research use only and is not intended for use in humans or animals.