

HSP90A Polyclonal Antibody

Catalog No: #41047



Package Size: #41047-1 50ul #41047-2 100ul

Orders: order@signalwayantibody.comSupport: tech@signalwayantibody.com

Description

Product Name	HSP90A Polyclonal Antibody
Host Species	Rabbit
Clonality	Polyclonal
Purification	The antibody was affinity-purified from rabbit antiserum by affinity-chromatography using epitope-specific immunogen.
Applications	WB IHC IF ELISA
Species Reactivity	Human;Mouse;Rat
Specificity	HSP90A Polyclonal Antibody detects endogenous levels of HSP90A protein.
Immunogen Type	peptide
Immunogen Description	Synthesized peptide derived from the C-terminal region of human HSP90A.
Conjugates	Unconjugated
Target Name	HSP90A
Other Names	HSP90AA1; HSP90A; HSPC1; HSPCA; Heat shock protein HSP 90-alpha; Heat shock 86 kDa; HSP 86; HSP86; Renal carcinoma antigen NY-REN-38
Accession No.	Swiss-Prot: P07900NCBI Gene ID: 3320
SDS-PAGE MW	85kd
Concentration	1mg/ml
Formulation	Liquid in PBS containing 50% glycerol, 0.5% BSA and 0.02% sodium azide.
Storage	Store at -20°C/1 year

Application Details

Western Blot: 1/500 - 1/2000.

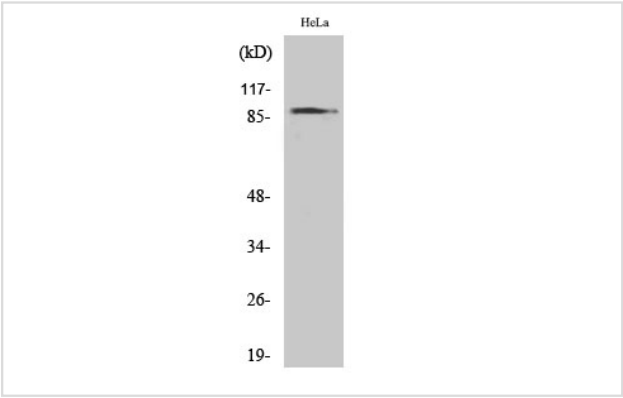
Immunohistochemistry: 1/100 - 1/300.

Immunofluorescence: 1/200 - 1/1000.

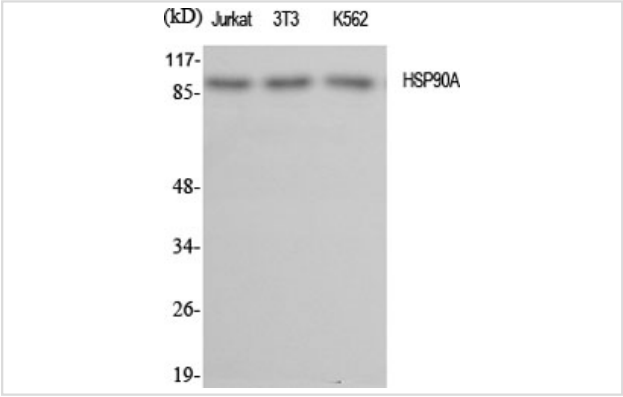
ELISA: 1/40000.

Not yet tested in other applications.

Images



Western Blot analysis of HeLa cells using HSP90A Polyclonal Antibody



Western Blot analysis of Jurkat NIH-3T3 K562 cells using HSP90A Polyclonal Antibody

Published Papers

el at., LncRNA-MEG3 attenuates hyperglycemia-induced damage by enhancing mitochondrial translocation of HSP90A in the primary hippocampal neurons. In Exp Cell Res on 2022 Oct 15 by Wanqing Zhou, Zhihua Wang,et al..PMID:35998683, , (2022)
[PMID:35998683](#)

Note: This product is for in vitro research use only and is not intended for use in humans or animals.