

Lamin A/C Polyclonal Antibody

Catalog No: #41099



Package Size: #41099-1 50ul #41099-2 100ul

Orders: order@signalwayantibody.comSupport: tech@signalwayantibody.com

Description

Product Name	Lamin A/C Polyclonal Antibody
Host Species	Rabbit
Clonality	Polyclonal
Purification	The antibody was affinity-purified from rabbit antiserum by affinity-chromatography using epitope-specific immunogen.
Applications	WB IHC IF ELISA
Species Reactivity	Human;Mouse;Rat
Specificity	Lamin A/C Polyclonal Antibody detects endogenous levels of Lamin A/C protein.
Immunogen Description	Synthesized peptide derived from human Lamin A/C around the non-phosphorylation site of S392.
Conjugates	Unconjugated
Target Name	Lamin A/C
Other Names	LMNA; LMN1; Prelamin-A/C
Accession No.	Swiss-Prot: P02545NCBI Gene ID: 4000
SDS-PAGE MW	75kd
Concentration	1mg/ml
Formulation	Liquid in PBS containing 50% glycerol, 0.5% BSA and 0.02% sodium azide.
Storage	Store at -20°C/1 year

Application Details

Western Blot: 1/500 - 1/2000.

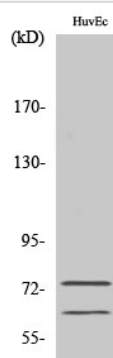
Immunohistochemistry: 1/100 - 1/300.

Immunofluorescence: 1/200 - 1/1000.

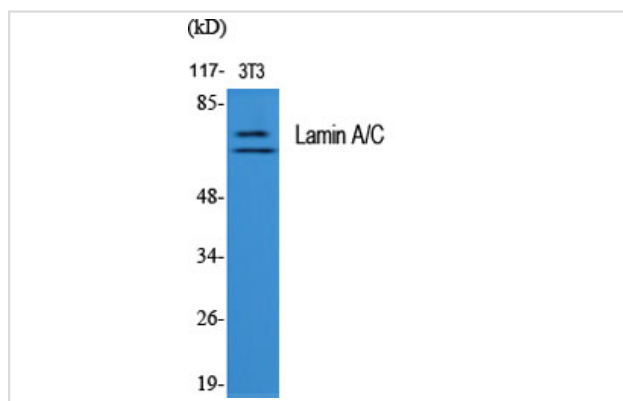
ELISA: 1/20000.

Not yet tested in other applications.

Images



Western Blot analysis of HepG2 cells using Lamin A/C Polyclonal Antibody



Western Blot analysis of NIH-3T3 cells using Lamin A/C Polyclonal Antibody

Published Papers

el at., Phytoestrogens protect joints in collagen induced arthritis by increasing IgG glycosylation and reducing osteoclast activation. In Int Immunopharmacol on 2020 Mar 12 by Du N, Song L, et al..PMID:32172207, , (2020)

[PMID:32172207](#)

el at., Two nuclear localization signals regulate intracellular localization of the duck enteritis virus UL13 protein. In Poult Sci on 2021 Jan by Linjiang Yang, Xixia Hu, et al..PMID:33357689, , (2021)

[PMID:33357689](#)

Note: This product is for in vitro research use only and is not intended for use in humans or animals.