

# NPY2-R Polyclonal Antibody

Catalog No: #41253

Package Size: #41253-1 50ul #41253-2 100ul

Orders: [order@signalwayantibody.com](mailto:order@signalwayantibody.com)Support: [tech@signalwayantibody.com](mailto:tech@signalwayantibody.com)

## Description

Product Name	NPY2-R Polyclonal Antibody
Host Species	Rabbit
Clonality	Polyclonal
Purification	The antibody was affinity-purified from rabbit antiserum by affinity-chromatography using epitope-specific immunogen.
Applications	WB IF ELISA
Species Reactivity	Human;Mouse;Rat
Specificity	NPY2-R Polyclonal Antibody detects endogenous levels of NPY2-R protein.
Immunogen Type	peptide
Immunogen Description	Synthesized peptide derived from the N-terminal region of human NPY2-R.
Conjugates	Unconjugated
Target Name	NPY2-R
Other Names	NPY2R; Neuropeptide Y receptor type 2; NPY2-R; NPY-Y2 receptor; Y2 receptor
Accession No.	Swiss-Prot: P49146NCBI Gene ID: 4887
SDS-PAGE MW	43kd
Concentration	1mg/ml
Formulation	Liquid in PBS containing 50% glycerol, 0.5% BSA and 0.02% sodium azide.
Storage	Store at -20°C/1 year

## Application Details

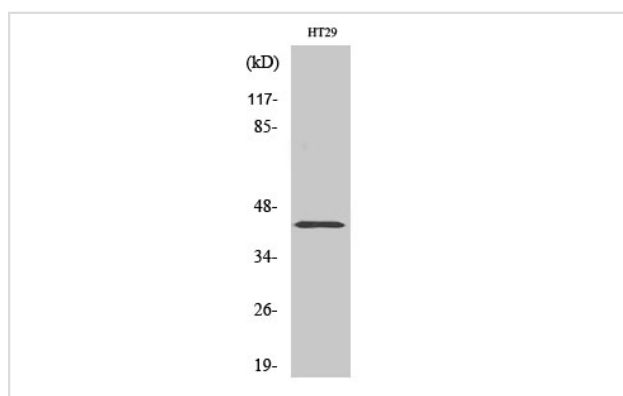
Western Blot: 1/500 - 1/2000.

Immunofluorescence: 1/200 - 1/1000.

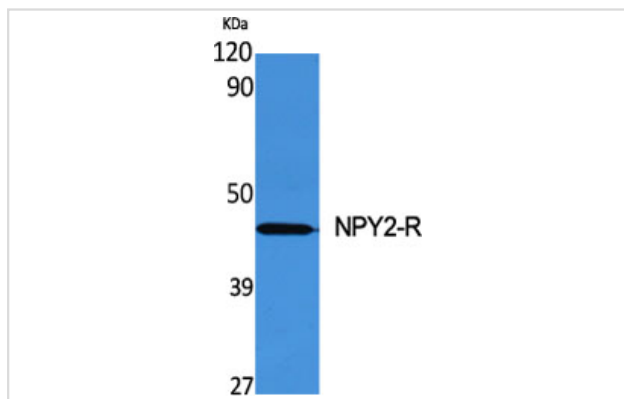
ELISA: 1/5000.

Not yet tested in other applications.

## Images



Western Blot analysis of HT29 cells using NPY2-R Polyclonal Antibody



Western Blot analysis of various cells using NPY2-R Polyclonal Antibody

Note: This product is for in vitro research use only and is not intended for use in humans or animals.