

## Smad2/3 Polyclonal Antibody

Catalog No: #41444



Package Size: #41444-1 50ul #41444-2 100ul

Orders: order@signalwayantibody.com

Support: tech@signalwayantibody.com

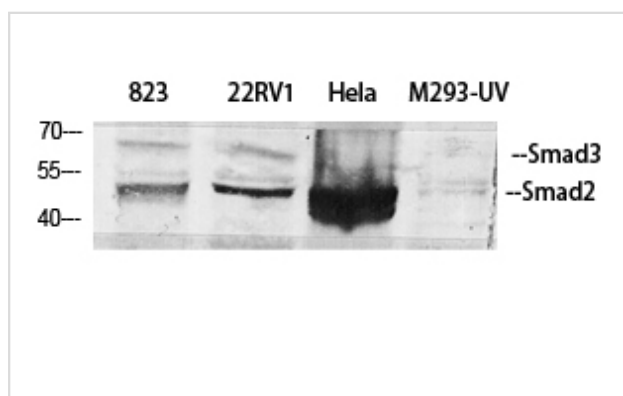
## Description

Product Name	Smad2/3 Polyclonal Antibody
Host Species	Rabbit
Clonality	Polyclonal
Purification	The antibody was affinity-purified from rabbit antiserum by affinity-chromatography using epitope-specific immunogen.
Applications	WB;IHC;IF;ELISA
Species Reactivity	Human;Mouse;Rat;Monkey
Specificity	Smad2/3 Polyclonal Antibody detects endogenous levels of Smad2/3 protein.
Immunogen Type	peptide
Immunogen Description	Synthesized peptide derived from human Smad2/3 around the non-phosphorylation site of T8.
Conjugates	Unconjugated
Target Name	Smad2/3
Other Names	SMAD2; MADH2; MADR2; Mothers against decapentaplegic homolog 2; MAD homolog 2; Mothers against DPP homolog 2; JV18-1; Mad-related protein 2; hMAD-2; SMAD family member 2; SMAD 2; Smad2; hSMAD2; SMAD3; MADH3; Mothers against decapentaplegic
Accession No.	Swiss-Prot: Q15796/P84022NCBI Gene ID: 4087/4088
Calculated MW	52kDa,48kDa
SDS-PAGE MW	48-60kDa
Concentration	1mg/ml
Formulation	Liquid in PBS containing 50% glycerol, 0.5% BSA and 0.02% sodium azide.
Storage	Store at -20°C/1 year

## Application Details

WB 1:500-1:2000; IHC 1:100-1:300; IF 1:100-1:300;ELISA 1:5000-1:20000;

## Images



Western Blot analysis of 823 22RV1 HELA 293-UV cells using Smad2/3 Polyclonal Antibody

## Published Papers

---

et al., Arsenic trioxide Inhibits the differentiation of fibroblasts to myofibroblasts through nuclear factor erythroid 2-like 2 (NFE2L2) protein and the Smad2/3 pathway. In J Cell Physiol on 2019 Mar by Zhong L, Hao H, et al..PMID:30317545, , (2019)

[PMID:30317545](#)

---

---

Note: This product is for in vitro research use only and is not intended for use in humans or animals.