

## ET-1 Polyclonal Antibody

Catalog No: #41562

Package Size: #41562-1 50ul #41562-2 100ul

Orders: [order@signalwayantibody.com](mailto:order@signalwayantibody.com)Support: [tech@signalwayantibody.com](mailto:tech@signalwayantibody.com)

## Description

Product Name	ET-1 Polyclonal Antibody
Host Species	Rabbit
Clonality	Polyclonal
Purification	The antibody was affinity-purified from rabbit antiserum by affinity-chromatography using epitope-specific immunogen.
Applications	WB IHC IF ELISA
Species Reactivity	Human;Mouse;Rat
Specificity	ET-1 Polyclonal Antibody detects endogenous levels of ET-1 protein.
Immunogen Description	Synthesized peptide derived from the Internal region of human ET-1.
Conjugates	Unconjugated
Target Name	ET-1
Other Names	EDN1; Endothelin-1; Preproendothelin-1; PPET1
Accession No.	Swiss-Prot: P05305NCBI Gene ID: 1906
SDS-PAGE MW	25kd
Concentration	1mg/ml
Formulation	Liquid in PBS containing 50% glycerol, 0.5% BSA and 0.02% sodium azide.
Storage	Store at -20°C/1 year

## Application Details

Western Blot: 1/500 - 1/2000.

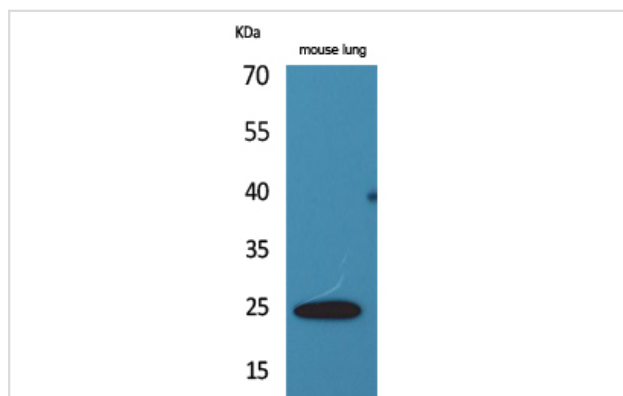
ELISA: 1/20000.

Not yet tested in other applications.

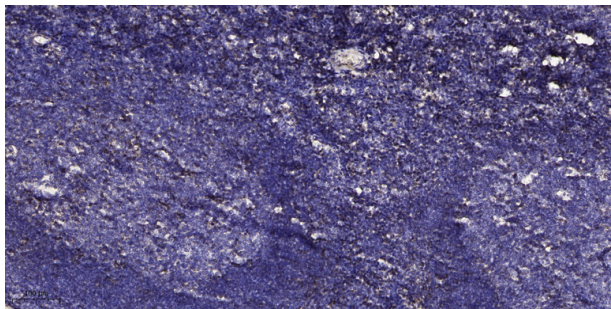
IHC-p: 100-300

IF 1:50-200

## Images



Western Blot analysis of mouse lung cells using ET-1 Polyclonal Antibody



Immunohistochemical analysis of paraffin-embedded human tonsil. Antibody was diluted at 1:200(4° overnight) Tris-EDTA,pH9.0 was used for antigen retrieval. Secondary antibody was diluted at 1:200

## Published Papers

et al., Selenoprotein S attenuates endothelial dysfunction in a diabetic vascular chip. In Exp Gerontol on 2020 Apr 28 by Zhong Y, Yu S et al.. PMID: 32353414, (2020)

[PMID:32353414](#)

Note: This product is for in vitro research use only and is not intended for use in humans or animals.