

Apelin Polyclonal Antibody

Catalog No: #41574

Package Size: #41574-1 50ul #41574-2 100ul

Orders: order@signalwayantibody.comSupport: tech@signalwayantibody.com

Description

Product Name	Apelin Polyclonal Antibody
Host Species	Rabbit
Clonality	Polyclonal
Purification	The antibody was affinity-purified from rabbit antiserum by affinity-chromatography using epitope-specific immunogen.
Applications	WB ELISA IHC;IF
Species Reactivity	Human;Mouse;Rat
Specificity	Apelin Polyclonal Antibody detects endogenous levels of Apelin protein.
Immunogen Description	Synthesized peptide derived from the C-terminal region of human Apelin.
Conjugates	Unconjugated
Target Name	Apelin
Other Names	APLN; APEL; Apelin; APJ endogenous ligand
Accession No.	Swiss-Prot: Q9ULZ1NCBI Gene ID: 8862
SDS-PAGE MW	16kd
Concentration	1mg/ml
Formulation	Liquid in PBS containing 50% glycerol, 0.5% BSA and 0.02% sodium azide.
Storage	Store at -20°C/1 year

Application Details

Western Blot: 1/500 - 1/2000.

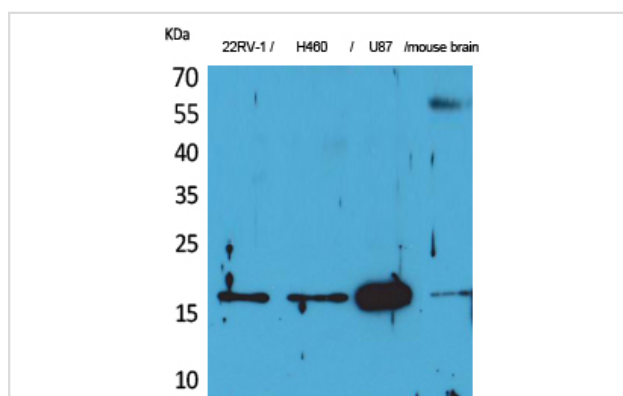
ELISA: 1/20000.

IHC-p: 1:100-300 oO

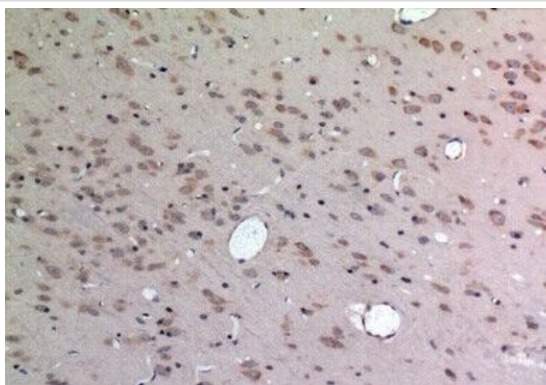
IF 1:100-300

Not yet tested in other applications.

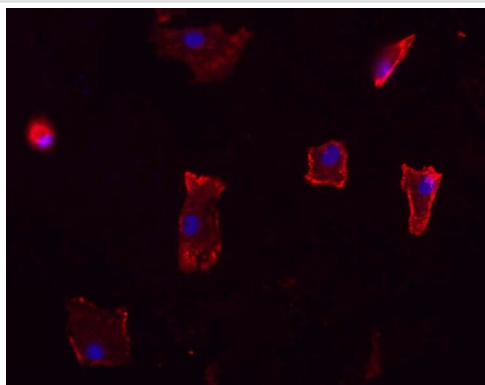
Images



Western Blot analysis of 22RV-1 H460 U87 mouse brain cells using Apelin Polyclonal Antibody



Immunohistochemical analysis of paraffin-embedded rat-brain, antibody was diluted at 1:100



Immunofluorescence analysis of A549. 1,primary Antibody(red) was diluted at 1:200(4°C overnight). 2, Goat Anti Rabbit IgG (H&L) - Alexa Fluor 594 Secondary antibody was diluted at 1:1000(room temperature, 50min).3, Picture B: DAPI(blue) 10min.

Published Papers

el at., Icariin Ameliorates Diabetic Cardiomyopathy Through Apelin/Sirt3 Signalling to Improve Mitochondrial Dysfunction.In Front Pharmacol on 2020 Mar 19; by Ni T, Lin N, et al..PMID: 32265695, , (2020)

[PMID:32265695](#)

Note: This product is for in vitro research use only and is not intended for use in humans or animals.