

Lamin B1 Polyclonal Antibody

Catalog No: #41589



Package Size: #41589-1 50ul #41589-2 100ul

Orders: order@signalwayantibody.com
Support: tech@signalwayantibody.com

Description

Product Name	Lamin B1 Polyclonal Antibody
Host Species	Rabbit
Clonality	Polyclonal
Purification	The antibody was affinity-purified from rabbit antiserum by affinity-chromatography using epitope-specific immunogen.
Applications	WB ELISA
Species Reactivity	Human;Mouse;Rat
Specificity	Lamin B1 Polyclonal Antibody detects endogenous levels of Lamin B1 protein.
Immunogen Type	peptide
Immunogen Description	Synthesized peptide derived from the Internal region of human Lamin B1.
Conjugates	Unconjugated
Target Name	Lamin B1
Other Names	LMNB1; LMN2; LMNB; Lamin-B1
Accession No.	Swiss-Prot: P20700NCBI Gene ID: 4001
SDS-PAGE MW	70kd
Concentration	1mg/ml
Formulation	Liquid in PBS containing 50% glycerol, 0.5% BSA and 0.02% sodium azide.
Storage	Store at -20°C/1 year

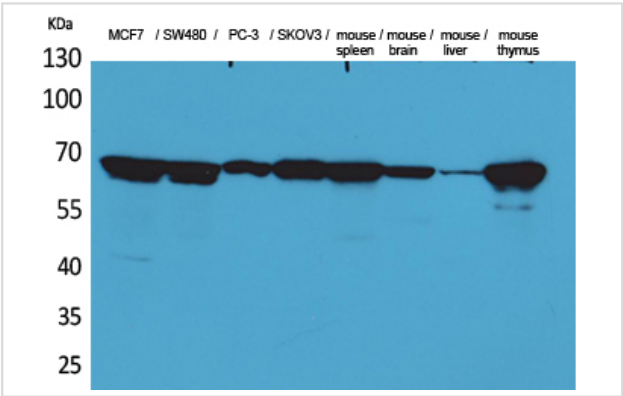
Application Details

Western Blot: 1/500 - 1/2000.

ELISA: 1/20000.

Not yet tested in other applications.

Images



Western Blot analysis of MCF7 SW480 PC-3 SKOV3 mouse spleen mouse brain mouse liver mouse thymus cells using Lamin B1 Polyclonal Antibody

Published Papers

el at., The Effects of Xiangqing Anodyne Spray on treating acute soft-Tissue injury mainly depend on suppressing activations of AKT and p38 pathways. In Evid Based Complement Alternat Med on 2016 by Shudong Wang , Tao Li et al..PMID:27190541, , (2016)

[PMID:27190541](#)

el at., Pyruvate Kinase M2 Promotes the Activation of Dendritic Cells by Enhancing IL-12p35 Expression. In Cell Rep on 2020 May 26 by Xin Jin, Wenxia Zhang, et al..PMID:32460017, , (2020)

[PMID:32460017](#)

Note: This product is for in vitro research use only and is not intended for use in humans or animals.