

gp91-phox Polyclonal Antibody

Catalog No: #41769



Package Size: #41769-1 50ul #41769-2 100ul

Orders: order@signalwayantibody.comSupport: tech@signalwayantibody.com

Description

Product Name	gp91-phox Polyclonal Antibody
Host Species	Rabbit
Clonality	Polyclonal
Purification	The antibody was affinity-purified from rabbit antiserum by affinity-chromatography using epitope-specific immunogen.
Applications	WB ELISA IHC α O IF
Species Reactivity	Human;Mouse;Rat
Specificity	gp91-phox Polyclonal Antibody detects endogenous levels of gp91-phox protein.
Immunogen Description	Synthesized peptide derived from the Internal region of human gp91-phox.
Conjugates	Unconjugated
Target Name	gp91-phox
Other Names	CYBB; NOX2; Cytochrome b-245 heavy chain; CGD91-phox; Cytochrome b(558) subunit beta; Cytochrome b558 subunit beta; Heme-binding membrane glycoprotein gp91phox; NADPH oxidase 2
Accession No.	Swiss-Prot: P04839NCBI Gene ID: 1536
SDS-PAGE MW	70kd
Concentration	1mg/ml
Formulation	Liquid in PBS containing 50% glycerol, 0.5% BSA and 0.02% sodium azide.
Storage	Store at -20°C/1 year

Application Details

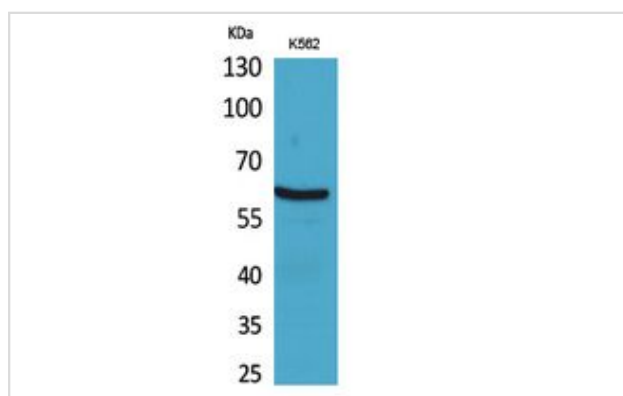
Western Blot: 1/500 - 1/2000.

ELISA: 1/20000.

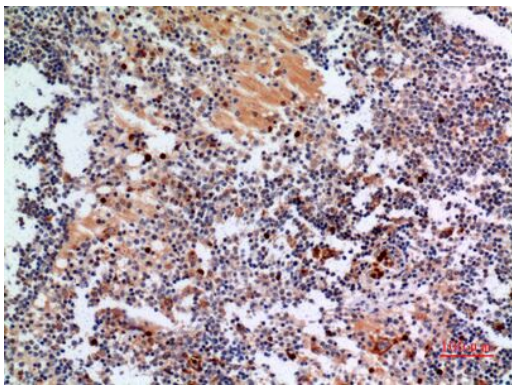
IHC: 1/100-1/300

Not yet tested in other applications.

Images



Western Blot analysis of K562 cells using gp91-phox Polyclonal Antibody.



Immunohistochemical analysis of paraffin-embedded human-lymph-gland, antibody was diluted at 1:100

Published Papers

el at., Blockage of NOX2/MAPK/NF- κ B Pathway Protects Photoreceptors Against Glucose Deprivation-Induced Cell Death.In Oxid Med Cell Longev
2017 sep 11 by Bin Fan, Bei-Fen Wang,et al..PMID: 29085555, , (2017)

[PMID:29085555](#)

Note: This product is for in vitro research use only and is not intended for use in humans or animals.