

## TMEM173 Polyclonal Antibody

Catalog No: #41859



Package Size: #41859-1 50ul #41859-2 100ul

Orders: [order@signalwayantibody.com](mailto:order@signalwayantibody.com)Support: [tech@signalwayantibody.com](mailto:tech@signalwayantibody.com)

## Description

Product Name	TMEM173 Polyclonal Antibody
Host Species	Rabbit
Clonality	Polyclonal
Purification	The antibody was affinity-purified from rabbit antiserum by affinity-chromatography using epitope-specific immunogen.
Applications	WB,IHC,IF
Species Reactivity	Human;Mouse
Specificity	TMEM173 Polyclonal Antibody detects endogenous levels of TMEM173 protein.
Immunogen Description	Synthesized peptide derived from the C-terminal region of human TMEM173.
Conjugates	Unconjugated
Target Name	TMEM173
Other Names	TMEM173; ERIS; MITA; STING; Transmembrane protein 173; Endoplasmic reticulum interferon stimulator; ERIS; Mediator of IRF3 activation; hMITA; Stimulator of interferon genes protein; hSTING
Accession No.	Swiss-Prot: Q86WV6NCBI Gene ID: 340061
SDS-PAGE MW	42kd
Concentration	1mg/ml
Formulation	Liquid in PBS containing 50% glycerol, 0.5% BSA and 0.02% sodium azide.
Storage	Store at -20°C/1 year

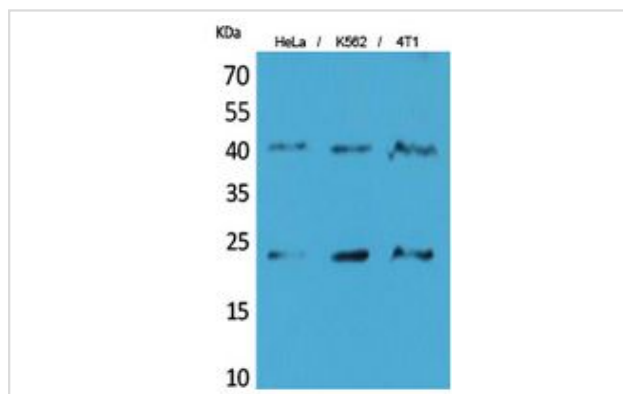
## Application Details

Western Blot: 1/500 - 1/2000.

ELISA: 1/20000.

Not yet tested in other applications.

## Images



Western Blot analysis of HeLa, K562, 4T1 cells using TMEM173 Polyclonal Antibody.

---

Note: This product is for in vitro research use only and is not intended for use in humans or animals.