

IGFBP3 Polyclonal Antibody

Catalog No: #41888

Package Size: #41888-1 50ul #41888-2 100ul

Orders: order@signalwayantibody.comSupport: tech@signalwayantibody.com

Description

Product Name	IGFBP3 Polyclonal Antibody
Host Species	Rabbit
Clonality	Polyclonal
Purification	The antibody was affinity-purified from rabbit antiserum by affinity-chromatography using epitope-specific immunogen.
Applications	WB ELISA IHC IF
Species Reactivity	Human;Mouse;Rat
Specificity	IGFBP3 Polyclonal Antibody detects endogenous levels of IGFBP3 protein.
Immunogen Description	Synthesized peptide derived from the Internal region of human IGFBP3.
Conjugates	Unconjugated
Target Name	IGFBP3
Other Names	IGFBP3; IBP3; Insulin-like growth factor-binding protein 3; IBP-3; IGF-binding protein 3; IGFBP-3
Accession No.	Swiss-Prot: P17936NCBI Gene ID: 3486
SDS-PAGE MW	30kd
Concentration	1mg/ml
Formulation	Liquid in PBS containing 50% glycerol, 0.5% BSA and 0.02% sodium azide.
Storage	Store at -20°C/1 year

Application Details

Western Blot: 1/500 - 1/2000.

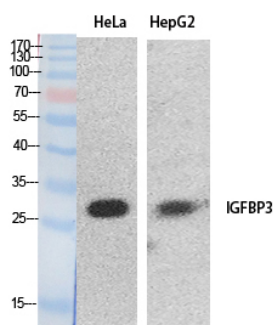
ELISA: 1/20000.

IHC-p 1:100-500;

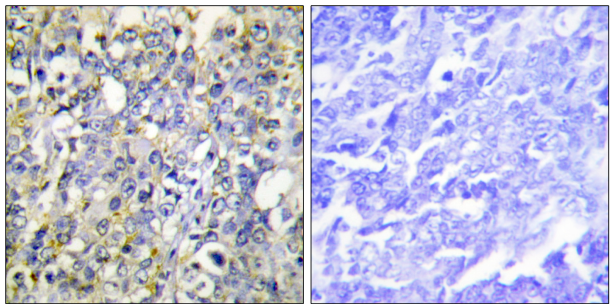
IF ICC 1:100-500

Not yet tested in other applications.

Images



Western Blot analysis of HeLa HepG2 cells using IGFBP3 Polyclonal Antibody



Immunohistochemistry analysis of paraffin-embedded human lung carcinoma tissue, using IGFBP-3 Antibody. The picture on the right is blocked with the synthesized peptide.

Published Papers

el at., Androgen receptor-induced molecules and androgen contribute synergistically to male-predominance of hepatocellular carcinoma. In iScience on 2024 Jul 15 by Jiayi Zhao, Letian Fang,et al..PMID:39156638, , (2024)

[PMID:39156638](#)

Note: This product is for in vitro research use only and is not intended for use in humans or animals.