

CD19 Polyclonal Antibody

Catalog No: #41946



Package Size: #41946-1 50ul #41946-2 100ul

Orders: order@signalwayantibody.comSupport: tech@signalwayantibody.com

Description

Product Name	CD19 Polyclonal Antibody
Host Species	Rabbit
Clonality	Polyclonal
Purification	The antibody was affinity-purified from rabbit antiserum by affinity-chromatography using epitope-specific immunogen.
Applications	WB;IHC;IF;ELISA
Species Reactivity	Human;Mouse;Rat
Specificity	CD19 Polyclonal Antibody detects endogenous levels of CD19 protein.
Immunogen Description	Synthesized peptide derived from the Internal region of human CD19.
Conjugates	Unconjugated
Target Name	CD19
Other Names	CD19; B-lymphocyte antigen CD19; B-lymphocyte surface antigen B4; Differentiation antigen CD19; T-cell surface antigen Leu-12; CD19
Accession No.	Swiss-Prot: P15391NCBI Gene ID: 930
SDS-PAGE MW	61kd
Concentration	1mg/ml
Formulation	Liquid in PBS containing 50% glycerol, 0.5% BSA and 0.02% sodium azide.
Storage	Store at -20°C/1 year

Application Details

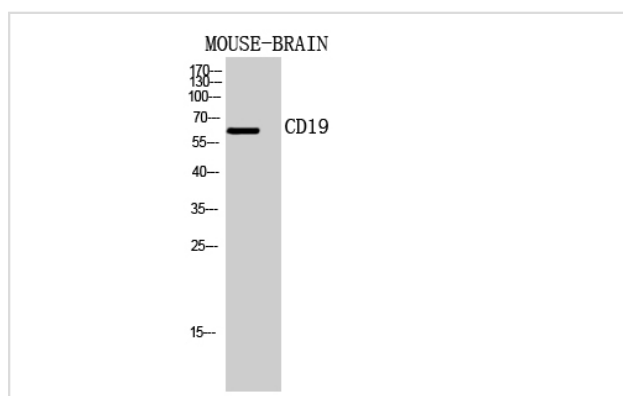
Western Blot: 1/500 - 1/2000.

ELISA: 1/10000.

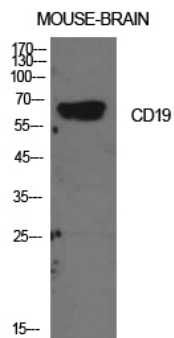
IHC-p 1:100-500

Not yet tested in other applications.

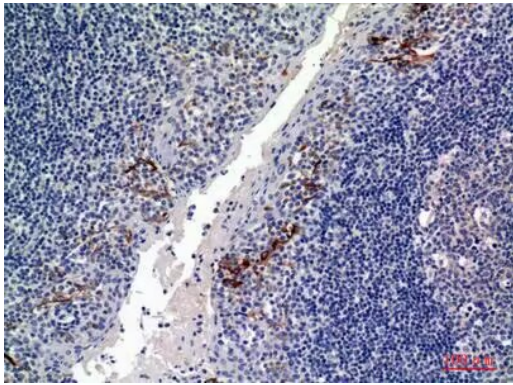
Images



Western Blot analysis of MOUSE-BRAIN cells using CD19 Polyclonal Antibody



Western Blot analysis of mouse brain cells using CD19 Polyclonal Antibody



Immunohistochemical analysis of paraffin-embedded human-tonsils, antibody was diluted at 1:100

Note: This product is for in vitro research use only and is not intended for use in humans or animals.