

LTA4H Antibody

Catalog No: #42720



Package Size: #42720-1 50ul #42720-2 100ul

Orders: order@signalwayantibody.com

Support: tech@signalwayantibody.com

Description

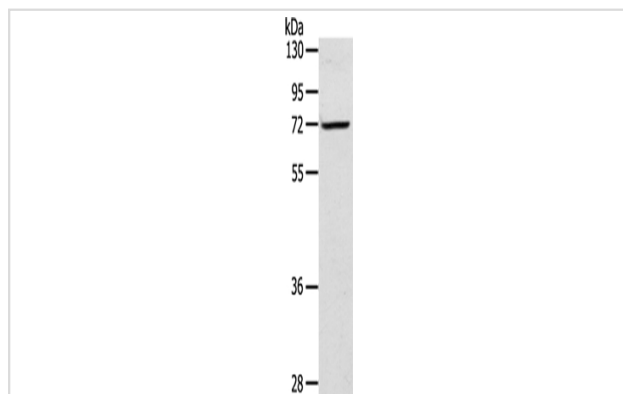
Product Name	LTA4H Antibody
Host Species	Rabbit
Clonality	Polyclonal
Purification	Antigen affinity purification.
Applications	WB
Species Reactivity	Human;Mouse
Specificity	The antibody detects endogenous levels of total LTA4H protein.
Immunogen Type	protein
Immunogen Description	Fusion protein of human LTA4H
Conjugates	Unconjugated
Target Name	LTA4H
Other Names	Leukotriene A-4 hydrolase; leukotriene A4 hydrolase; LKHA4; LTA-4 hydrolase; LTA4; LTA4H
Accession No.	Swiss-Prot#: P09960Gene ID: 4048
Calculated MW	69kd
Concentration	1mg/ml
Formulation	Rabbit IgG in pH7.4 PBS, 0.05% NaN ₃ , 40% Glycerol.
Storage	Store at -20°C

Application Details

Western blotting: 1:500-1:2000

Immunohistochemistry: 1:10-1:50

Images



Gel: 8%SDS-PAGE

Lysate: 40 µg

Lane: TM4 cells

Primary antibody: 1/300 dilution

Secondary antibody: Goat anti rabbit IgG at 1/8000 dilution

Exposure time: 20 seconds

Background

LTA4H (Leukotriene A4-hydrolase) is a Zn²⁺-containing enzyme with both epoxide hydrolase and aminopeptidase activity. As an epoxide hydrolase,

LTA4H catalyzes the hydration of LTA4 to leukotriene B4 (LTB4, 5S,12R-dihydroxy-6,14-cis-8,10-trans-eicosatetraenoic acid), a potent lipid chemoattractant that influences inflammation, immune responses, and host defense against infection. As an aminopeptidase, LTA4H catalyzes the cleavage of amides of para-nitroaniline. The human LTA4H gene encodes a 610 amino acid protein.

Published Papers

el at., CCR9 Promotes Migration and Invasion of Lung Adenocarcinoma Cancer Stem Cells.In Int J Med Sci on 2020 Mar 26; by Lu L, Du H, et al..PMID: 32308544, , (2020)

[PMID:32308544](#)

Note: This product is for in vitro research use only and is not intended for use in humans or animals.