

## SYNPO2 Antibody

Catalog No: #43152



Package Size: #43152-1 50ul #43152-2 100ul

Orders: [order@signalwayantibody.com](mailto:order@signalwayantibody.com)Support: [tech@signalwayantibody.com](mailto:tech@signalwayantibody.com)

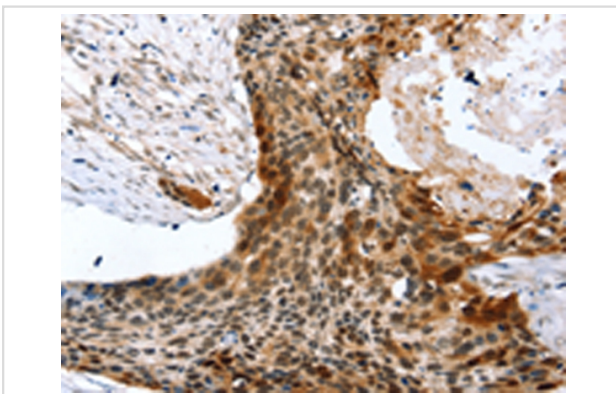
## Description

Product Name	SYNPO2 Antibody
Host Species	Rabbit
Clonality	Polyclonal
Purification	Antigen affinity purification.
Applications	IHC
Species Reactivity	Hu
Specificity	The antibody detects endogenous levels of total SYNPO2 protein.
Immunogen Type	peptide
Immunogen Description	Synthetic peptide of human SYNPO2
Target Name	SYNPO2
Other Names	SYNPO2
Accession No.	Swiss-Prot#: Q9UMS6 Gene ID: 171024
Concentration	2.5mg/ml
Formulation	Rabbit IgG in pH7.4 PBS, 0.05% NaN <sub>3</sub> , 40% Glycerol.
Storage	Store at -20°C

## Application Details

Immunohistochemistry: 1:10-1:50

## Images



Immunohistochemical analysis of paraffin-embedded Human esophagus cancer tissue using #43152 at dilution 1/45,

## Background

Synaptopodin-2 is a protein that in humans is encoded by the SYNPO2 gene. Has an actin-binding and actin-bundling activity. Synaptopodin is a proline-rich, actin-associated protein expressed in mature dendritic spines and renal podocytes. Synaptopodin appears to play a role in the actin-based plasticity of spines by linking actin to the spine apparatus.

## Published Papers

---

el et al., Synaptopodin-2 promotes hepatocellular carcinoma metastasis via calcineurin-induced nuclear-cytoplasmic translocation. In Cancer Lett on 2020 Jul 10 by Gao J, Zhang HP, et al..PMID: 32278815, , (2020)

[PMID:32278815](#)

---

---

Note: This product is for in vitro research use only and is not intended for use in humans or animals.