

GLI2 Antibody

Catalog No: #43461

Package Size: #43461-1 50ul #43461-2 100ul

Orders: order@signalwayantibody.comSupport: tech@signalwayantibody.com

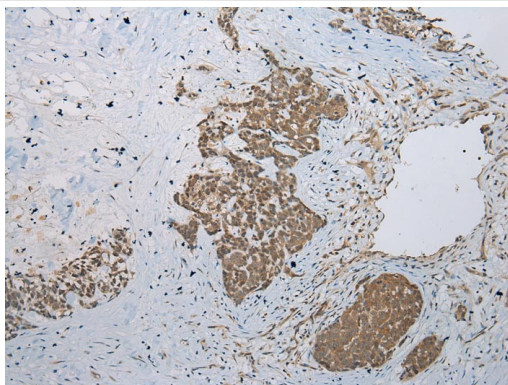
Description

Product Name	GLI2 Antibody
Host Species	Rabbit
Clonality	Polyclonal
Purification	Antigen affinity purification.
Applications	IHC
Species Reactivity	Human;Mouse
Specificity	The antibody detects endogenous levels of total GLI2 protein.
Immunogen Description	Synthetic peptide of human GLI2
Conjugates	Unconjugated
Target Name	GLI2
Other Names	CJS; HPE9; PHS2; THP1; THP2
Accession No.	Swiss-Prot#: P10070Gene ID: 2736
Concentration	2.4mg/ml
Formulation	Rabbit IgG in pH7.4 PBS, 0.05% NaN ₃ , 40% Glycerol.
Storage	Store at -20°C

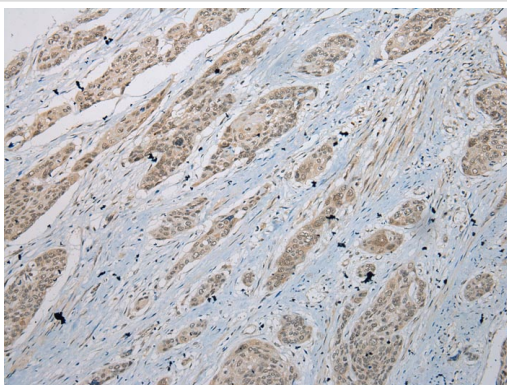
Application Details

Immunohistochemistry: 1:100-1:200

Images



Immunohistochemical analysis of paraffin-embedded Human Thyroid tissue using #43461 at dilution 1/200.



Immunohistochemical analysis of paraffin-embedded Human Esophagus cancer tissue using #43461 at dilution 1/200.

Background

This gene encodes a protein which belongs to the C2H2-type zinc finger protein subclass of the Gli family. Members of this subclass are characterized as transcription factors which bind DNA through zinc finger motifs. These motifs contain conserved H-C links. Gli family zinc finger proteins are mediators of Sonic hedgehog (Shh) signaling and they are implicated as potent oncogenes in the embryonal carcinoma cell. The protein encoded by this gene localizes to the cytoplasm and activates patched Drosophila homolog (PTCH) gene expression. It is also thought to play a role during embryogenesis. The encoded protein is associated with several phenotypes- Greig cephalopolysyndactyly syndrome, Pallister-Hall syndrome, preaxial polydactyly type IV, postaxial polydactyly types A1 and B.

Published Papers

el at., Suppressor of Fused (Sufu) Mediates the Effect of Parathyroid Hormone-Like Hormone (Pthlh) on Chondrocyte Differentiation in the Growth Plate. In J Biol Chem on 2012 Oct 19 by Xiaoyun Zhang, Steven Cheng, et al.. PMID:22930757, , (2012)

[PMID:22930757](#)

Note: This product is for in vitro research use only and is not intended for use in humans or animals.