

Myc-Tag Monoclonal Antibody(3E8)

Catalog No: #44004



Package Size: #44004-1 50ul #44004-2 100ul

Orders: order@signalwayantibody.com

Support: tech@signalwayantibody.com

Description

Product Name	Myc-Tag Monoclonal Antibody(3E8)
Host Species	Mouse
Clonality	Monoclonal
Clone No.	3.00E+08
Isotype	IgG1
Applications	WB IP IF ELISA
Specificity	The antibody can detect Myc fusion proteins.
Immunogen Type	Peptide
Immunogen Description	Synthetic Peptide
Target Name	Myc-Tag
Concentration	1mg/ml
Formulation	Liquid in PBS containing 50% glycerol, 0.5% BSA and 0.02% sodium azide.
Storage	Store at -20°C/1 year

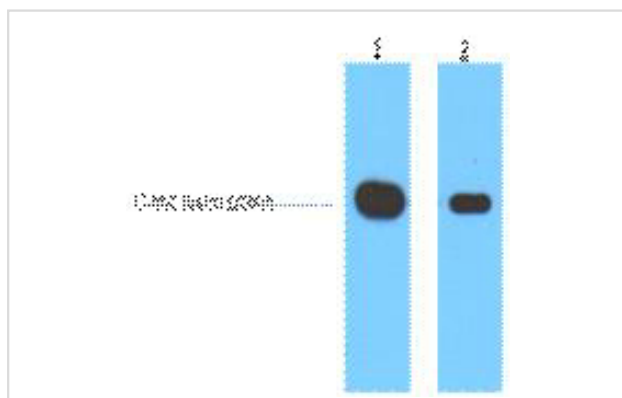
Application Details

Western blotting: 1:500-1:2000

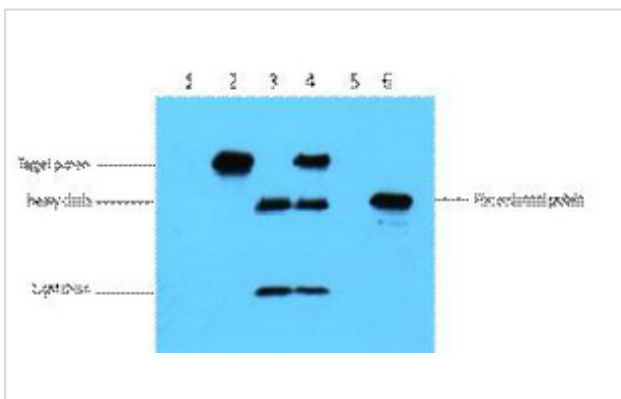
Immunoprecipitation: 1:100

Immunofluorescence: 1:50-1:100

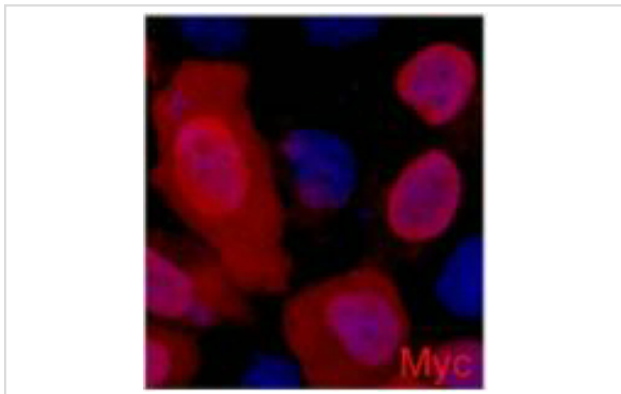
Images



1ug Myc fusion protein+ Primary antibody dilution at 1) 1:50002) 1:10000



IP antibody use: 3ug Flag Mouse IgG1 per ml Lysate, WB 1: 5000 1) untransfected 293 cell lysate 2) transfected 293 cell lysate with Myc-Tag fusion protein 3) IP (transfected 293+ normal Mouse IgG+Protein G agarose) 4) IP (transfected 293+anti- C-Myc m



IF analysis of 293 cells transfected with a Myc-tag protein, 1:2000 dilution (blue DAPI, red anti-Myc)

Note: This product is for in vitro research use only and is not intended for use in humans or animals.