

# Stat2 Polyclonal Antibody

Catalog No: #44126



Package Size: #44126-1 50ul #44126-2 100ul

Orders: [order@signalwayantibody.com](mailto:order@signalwayantibody.com)  
Support: [tech@signalwayantibody.com](mailto:tech@signalwayantibody.com)

## Description

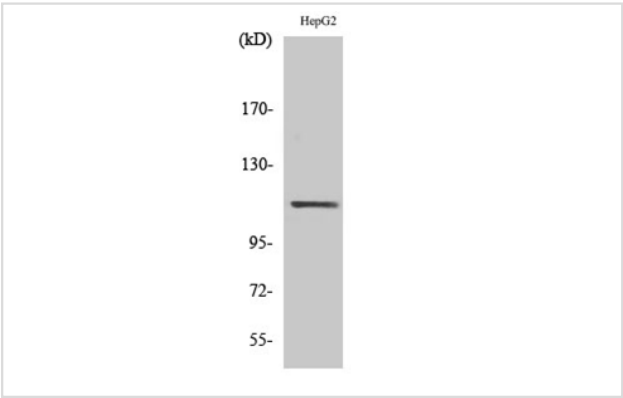
Product Name	Stat2 Polyclonal Antibody
Host Species	Rabbit
Clonality	Polyclonal
Isotype	IgG
Applications	WB;IP;IHC-p;IF
Species Reactivity	Human;Mouse;Rat
Specificity	Stat2 Polyclonal Antibody detects endogenous levels of Stat2 protein.
Immunogen Description	The antiserum was produced against synthesized peptide derived from human STAT2.
Conjugates	Unconjugated
Accession No.	Swiss-Prot#: P52630 NCBI Gene ID:6773
Calculated MW	113KD
Concentration	1 mg/ml
Formulation	Liquid in PBS containing 50% glycerol, 0.5% BSA and 0.02% sodium azide.
Storage	Store at -20°C/1 year

## Application Details

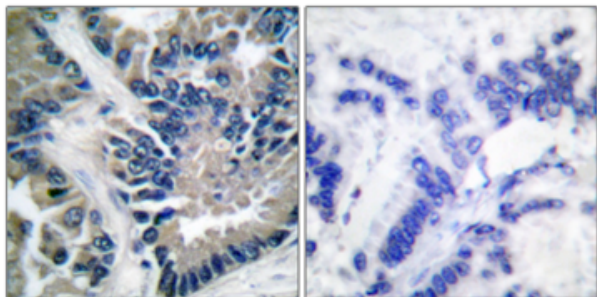
Western Blot: 1/500 - 1/2000

Immunohistochemistry: 1/100 - 1/300

## Images



Western Blot analysis of various cells using Stat2 Polyclonal Antibody



Immunohistochemistry analysis of paraffin-embedded human lung carcinoma tissue, using STAT2 Antibody.

## Published Papers

Zhao Risheng, Zhang Min, Yang Gege, Liu Wei, Yu Hui, Yan Shuang, Ren Ting, Zhang Linxin, Wang Mengyang, Sun Haiming et al., *Portulaca oleracea* L. Extract and Its Alkaloid Oleracein E Alleviates Cardiac Remodeling and Heart Failure in Mice by Targeting STAT2 Through the MAPK SignalingB  $\beta$  <sup>1</sup>, *Phytotherapy research : PTR*, (2025)

[PMID:40289247](#)

Note: This product is for in vitro research use only and is not intended for use in humans or animals.