

## OR56B2 Antibody

Catalog No: #44590



Package Size: #44590-1 50ul #44590-2 100ul

Orders: [order@signalwayantibody.com](mailto:order@signalwayantibody.com)Support: [tech@signalwayantibody.com](mailto:tech@signalwayantibody.com)

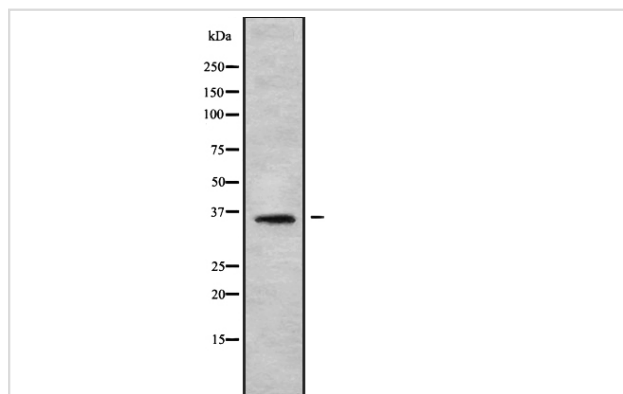
## Description

Product Name	OR56B2 Antibody
Host Species	Rabbit
Clonality	Polyclonal
Purification	The antibody was affinity-purified from rabbit antiserum by affinity-chromatography using epitope-specific immunogen.
Applications	WB
Species Reactivity	Human
Specificity	OR56B2 Antibody detects endogenous levels of total OR56B2
Immunogen Type	Peptide
Immunogen Description	A synthesized peptide derived from human OR56B2
Conjugates	Unconjugated
Target Name	OR56B2
Other Names	Putative olfactory receptor 56B2
Accession No.	Swiss-Prot#: Q8NGI1NCBI Gene ID:390073
Calculated MW	36 kDa
Concentration	1.0mg/mL
Formulation	Rabbit IgG in phosphate buffered saline , pH 7.4, 150mM NaCl, 0.02% sodium azide and 50% glycerol.
Storage	Store at -20°C

## Application Details

Western blotting: 1:1000-3000

## Images



Western blot analysis OR56B2 using HT-29 whole cell lysates

---

Note: This product is for in vitro research use only and is not intended for use in humans or animals.