

## TAS2R38 Antibody

Catalog No: #44623



Package Size: #44623-1 50ul #44623-2 100ul

Orders: [order@signalwayantibody.com](mailto:order@signalwayantibody.com)Support: [tech@signalwayantibody.com](mailto:tech@signalwayantibody.com)

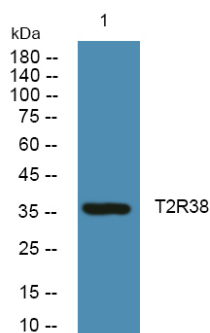
## Description

Product Name	TAS2R38 Antibody
Host Species	Rabbit
Clonality	Polyclonal
Purification	The antibody was affinity-purified from rabbit antiserum by affinity-chromatography using epitope-specific immunogen.
Applications	WB
Species Reactivity	Human;Mouse;Rat
Specificity	TAS2R38 Antibody detects endogenous levels of total TAS2R38
Immunogen Type	Peptide
Immunogen Description	A synthesized peptide derived from human TAS2R38
Conjugates	Unconjugated
Target Name	TAS2R38
Other Names	TAS2R38, Phenylthiocarbamide tasting, PTC bitter taste receptor, T2R61, PTC, T2R38
Accession No.	Swiss-Prot#: P59533NCBI Gene ID:5726
Calculated MW	38 kDa
Concentration	1.0mg/mL
Formulation	Rabbit IgG in phosphate buffered saline , pH 7.4, 150mM NaCl, 0.02% sodium azide and 50% glycerol.
Storage	Store at -20°C

## Application Details

Western blotting: 1:1000-3000

## Images



Western blot analysis of lysates from A431 cells, primary antibody was diluted at 1:1000, 4°C over night

---

Note: This product is for in vitro research use only and is not intended for use in humans or animals.