

CLCN3 Antibody

Catalog No: #45075

Package Size: #45075-1 50ul #45075-2 100ul

Orders: order@signalwayantibody.comSupport: tech@signalwayantibody.com

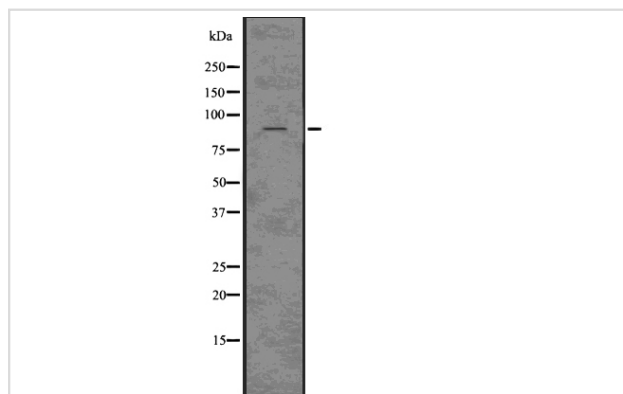
Description

| | |
|-----------------------|---|
| Product Name | CLCN3 Antibody |
| Host Species | Rabbit |
| Clonality | Polyclonal |
| Purification | The antibody was affinity-purified from rabbit antiserum by affinity-chromatography using epitope-specific immunogen. |
| Applications | WB |
| Species Reactivity | Human;Mouse;Rat |
| Specificity | CLCN3 Antibody detects endogenous levels of total CLCN3 |
| Immunogen Type | Peptide |
| Immunogen Description | A synthesized peptide derived from human CLCN3 |
| Conjugates | Unconjugated |
| Target Name | CLCN3 |
| Other Names | CLCN3, Chloride channel protein 3, CIC-3, Chloride channel 3, Chloride transporter CIC-3, CLC3 |
| Accession No. | Swiss-Prot#: P51790NCBI Gene ID:1182 |
| Calculated MW | 85 kDa |
| Concentration | 1.0mg/mL |
| Formulation | Rabbit IgG in phosphate buffered saline , pH 7.4, 150mM NaCl, 0.02% sodium azide and 50% glycerol. |
| Storage | Store at -20°C |

Application Details

Western blotting: 1:1000-3000

Images



Western blot analysis CLCN3 using HepG2 whole cell lysates

Published Papers

el at., Angiotensin-(1-7) ameliorates high glucose-induced vascular endothelial injury through suppressing chloride channel 3. In Bioengineered

on 2022 Feb by Fei Cheng, Jing Liu, et al..PMID: 35098884, , (2022)

[PMID:35098884](#)

Note: This product is for in vitro research use only and is not intended for use in humans or animals.