

MARCH1 Antibody

Catalog No: #45955



Package Size: #45955-1 50ul #45955-2 100ul

Orders: order@signalwayantibody.com

Support: tech@signalwayantibody.com

Description

| | |
|-----------------------|---|
| Product Name | MARCH1 Antibody |
| Host Species | Rabbit |
| Clonality | Polyclonal |
| Purification | The antibody was affinity-purified from rabbit antiserum by affinity-chromatography using epitope-specific immunogen. |
| Applications | WB IHC IF |
| Species Reactivity | Human;Mouse |
| Specificity | MARCH1 Antibody detects endogenous levels of total 42430 |
| Immunogen Type | Peptide |
| Immunogen Description | A synthesized peptide derived from human MARCH1 |
| Conjugates | Unconjugated |
| Target Name | 42430 |
| Other Names | MARCH1, MARCH-I, RING finger protein 171, RNF171 |
| Accession No. | Swiss-Prot#: Q8TCQ1NCBI Gene ID:55016 |
| Calculated MW | 32 kDa |
| Concentration | 1.0mg/mL |
| Formulation | Rabbit IgG in phosphate buffered saline , pH 7.4, 150mM NaCl, 0.02% sodium azide and 50% glycerol. |
| Storage | Store at -20°C |

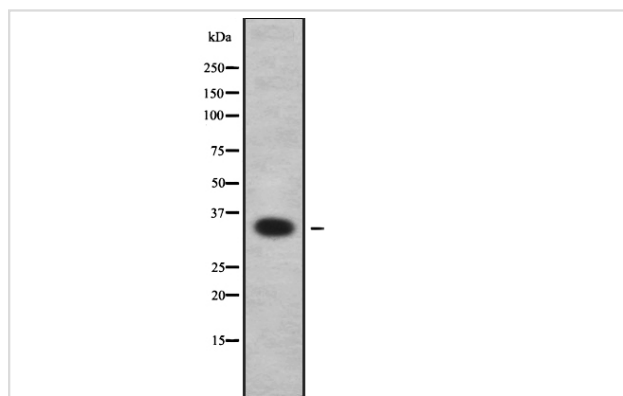
Application Details

Western blotting: 1:1000-3000

IHC 1:100-1:300

IF 1:50-200

Images



Western blot analysis MARCH1 using LOVO whole cell lysates

Published Papers

et al., MARCH1 silencing suppresses growth of oral squamous cell carcinoma through regulation of PHLPP2. In Clin Transl Oncol on 2022 Jul by L Liu, B Guo, et al.. PMID:35122633, (2022)

[PMID:35122633](#)

Note: This product is for in vitro research use only and is not intended for use in humans or animals.