

## NAV2 Rabbit Polyclonal Antibody

Catalog No: #46090

Package Size: #46090-1 50ul #46090-2 100ul

Orders: [order@signalwayantibody.com](mailto:order@signalwayantibody.com)Support: [tech@signalwayantibody.com](mailto:tech@signalwayantibody.com)

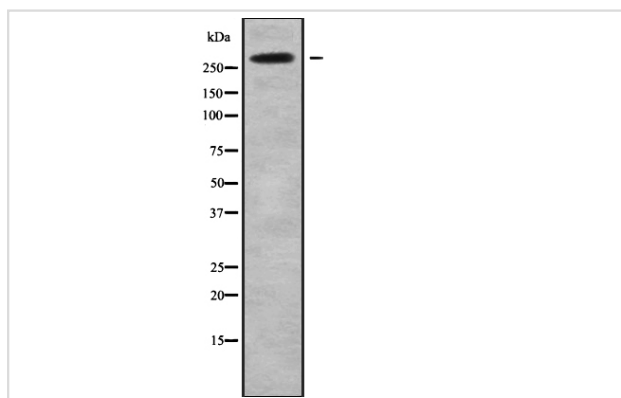
## Description

Product Name	NAV2 Rabbit Polyclonal Antibody
Host Species	Rabbit
Clonality	Polyclonal
Isotype	IgG
Purification	Affinity purification
Applications	WB,IHC,IF
Species Reactivity	Human
Immunogen Description	Recombinant fusion protein of human NAV2 (NP_660093.2).
Conjugates	Unconjugated
Other Names	NAV2;HELAD1;POMFIL2;RAINB1;STEERIN2;UNC53H2
Accession No.	Swiss Prot:Q8IVL1 GenelD:89797
Calculated MW	268kDa
SDS-PAGE MW	100kDa
Formulation	Buffer: PBS with 0.02% sodium azide,50% glycerol,pH7.3.
Storage	Store at -20°C. Avoid freeze / thaw cycles.

## Application Details

WB □ 1:500 - 1:2000 IHC □ 1:50 - 1:100 IF □ 1:50 - 1:100

## Images



Western blot analysis NAV2 using HeLa whole cell lysates

## Background

This gene encodes a member of the neuron navigator gene family, which may play a role in cellular growth and migration. Multiple transcript variants encoding different isoforms have been found for this gene.

---

Note: This product is for in vitro research use only and is not intended for use in humans or animals.