

RGN Antibody

Catalog No: #46660



Package Size: #46660-1 50ul #46660-2 100ul

Orders: order@signalwayantibody.comSupport: tech@signalwayantibody.com

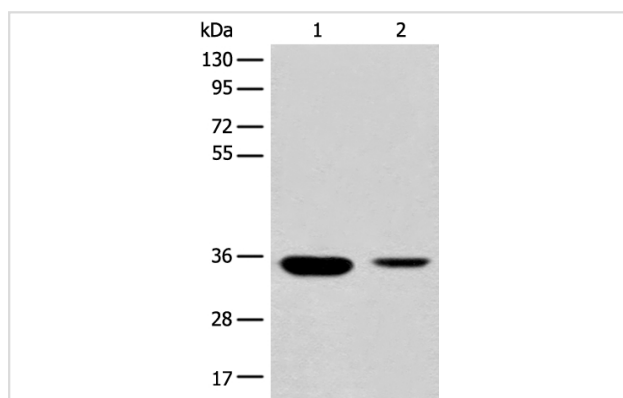
Description

Product Name	RGN Antibody
Host Species	Rabbit
Clonality	Polyclonal
Purification	Antigen affinity purification
Applications	WB
Species Reactivity	Human;Mouse
Specificity	The antibody detects endogenous levels of total RGN protein.
Immunogen Type	peptide
Immunogen Description	Synthetic peptide corresponding to residues near the C terminal of human RGN
Conjugates	Unconjugated
Target Name	RGN
Other Names	RC; GNL; SMP30; HEL-S-41
Accession No.	Swiss-Prot:Q15493NCBI Gene ID:9104NCBI Protein:NP_004674
Calculated MW	33 kDa
Concentration	1mg/ml
Formulation	Rabbit IgG in pH7.4 PBS, 0.05% NaN ₃ , 40% Glycerol.
Storage	Store at -20°C

Application Details

Western blotting: 1:500-1:2000

Images



Gel: 8%SDS-PAGE

lysate: 40 B₁ g, Lane 1-2: Mouse liver tissue and Human fetal liver tissue lysates,Primary antibody: 46660B₁B₁RGN Antibody) at dilution 1/500

Secondary antibody: Goat anti rabbit IgG at 1/8000 dilution,

Exposure time: 20 seconds

Background

The protein encoded by this gene is a highly conserved, calcium-binding protein, that is preferentially expressed in the liver and kidney. It may have an important role in calcium homeostasis. Studies in rat indicate that this protein may also play a role in aging, as it shows age-associated

down-regulation. This gene is part of a gene cluster on chromosome Xp11.3-Xp11.23. Alternative splicing results in multiple transcript variants.

Note: This product is for in vitro research use only and is not intended for use in humans or animals.