

## RNF217 Antibody

Catalog No: #47643

Package Size: #47643 100ul

Orders: [order@signalwayantibody.com](mailto:order@signalwayantibody.com)Support: [tech@signalwayantibody.com](mailto:tech@signalwayantibody.com)

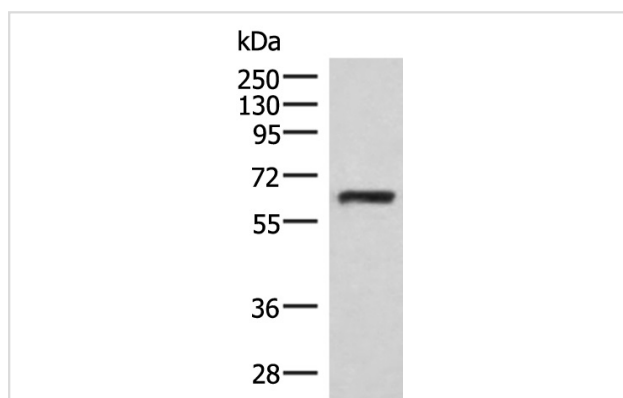
## Description

Product Name	RNF217 Antibody
Host Species	Rabbit
Clonality	Polyclonal
Purification	Antigen affinity purification
Applications	WB
Species Reactivity	Human;Mouse
Specificity	The antibody detects endogenous levels of total RNF217 protein.
Immunogen Type	Peptide
Immunogen Description	Synthetic peptide of human RNF217
Conjugates	Unconjugated
Target Name	RNF217
Other Names	OSTL; IBRDC1; C6orf172; dJ84N20.1
Accession No.	Swiss-Prot#:Q8TC41NCBI Gene ID:154214Gene Accssion:NP_001273327
Calculated MW	59 kDa
Concentration	0.7
Formulation	Rabbit IgG in pH7.4 PBS, 0.05% NaN <sub>3</sub> , 40% Glycerol.
Storage	Store at -20°C

## Application Details

WB dilution:1:200-1000

## Images



Gel: 8%SDS-PAGE, Lysate: 40  $\mu$ g, Lane: HepG2 cell lysate,  
 Primary antibody:47643(RNF217 Antibody) at dilution 1/250,  
 Secondary antibody: Goat anti rabbit IgG at 1/8000 dilution,  
 Exposure time: 1 minute

## Background

This protein encoded by this gene is a member of the RING1-IBR-RING24 (RBR) ubiquitin protein ligase family, and it belongs to a subfamily of these proteins that contain a transmembrane domain. This protein can interact with the HAX1 anti-apoptotic protein via its C-terminal RING finger motif,

which suggests a role in apoptosis signaling. It is thought that deregulation of this gene can be a mechanism in leukemogenesis. Mutations in the region encoding the protein GXXXG motif, which appears to be necessary for protein self-association, have been found in human cancers. Alternative splicing of this gene results in multiple transcript variants.

---

Note: This product is for in vitro research use only and is not intended for use in humans or animals.