

## TACO1 Antibody

Catalog No: #47762

Package Size: #47762 100ul

Orders: [order@signalwayantibody.com](mailto:order@signalwayantibody.com)Support: [tech@signalwayantibody.com](mailto:tech@signalwayantibody.com)

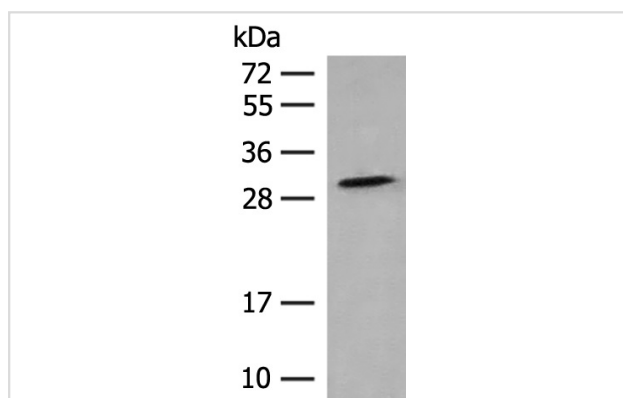
## Description

Product Name	TACO1 Antibody
Host Species	Rabbit
Clonality	Polyclonal
Purification	Antigen affinity purification
Applications	WB
Species Reactivity	Human;Mouse;Rat
Specificity	The antibody detects endogenous levels of total TACO1 protein.
Immunogen Type	Peptide
Immunogen Description	Synthetic peptide of human TACO1
Conjugates	Unconjugated
Target Name	TACO1
Other Names	CCDC44
Accession No.	Swiss-Prot#:Q9BSH4NCBI Gene ID:51204Gene Accssion:NP_057444
Calculated MW	32 kDa
Concentration	0.6
Formulation	Rabbit IgG in pH7.4 PBS, 0.05% NaN <sub>3</sub> , 40% Glycerol.
Storage	Store at -20°C

## Application Details

WB dilution:1:200-1000

## Images



Gel: 12%SDS-PAGE, Lysate: 40  $\mu$ g, Lane: 293T cell lysate,  
 Primary antibody:47762(TACO1 Antibody) at dilution 1/250,  
 Secondary antibody: Goat anti rabbit IgG at 1/8000 dilution,  
 Exposure time: 5 minutes

## Background

This gene encodes a mitochondrial protein that function as a translational activator of mitochondrially-encoded cytochrome c oxidase 1. Mutations in this gene are associated with Leigh syndrome.

---

Note: This product is for in vitro research use only and is not intended for use in humans or animals.