

Cytochrome P450 2E1 Antibody

Catalog No: #48247



Package Size: #48247-1 50ul #48247-2 100ul

Orders: [order@signalwayantibody.com](mailto:order@signalwayantibody.com)  
Support: [tech@signalwayantibody.com](mailto:tech@signalwayantibody.com)

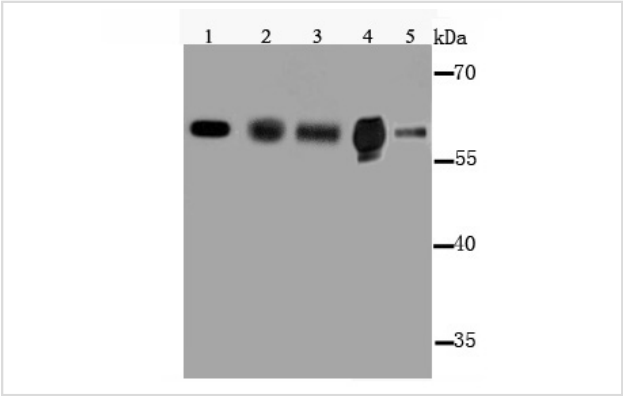
Description

Product Name	Cytochrome P450 2E1 Antibody
Host Species	Rabbit
Clonality	Polyclonal
Purification	Peptide affinity purified
Applications	WB, ICC, IHC
Species Reactivity	Human;Mouse
Immunogen Description	Peptide
Conjugates	Unconjugated
Other Names	4-nitrophenol 2-hydroxylase antibody CP2E1_HUMAN antibody CPE1 antibody CYP2E antibody Cyp2e1 antibody CYP1IIE1 antibody Cytochrome P450 2E1 antibody Cytochrome P450 isozyme 3A antibody Cytochrome P450 LM3A antibody Cytochrome P450, family 2, subfamily e, polypeptide 1 antibody cytochrome P450, subfamily IIE (ethanol-inducible), polypeptide 1 antibody Cytochrome P450, subfamily IIE antibody Cytochrome P450-ALC antibody Cytochrome P450-J antibody Cytochrome P450RLM6 antibody EC 1.14.13.- antibody EC 1.14.13.n7 antibody Ethanol-inducible P450 antibody Flavoprotein-linked monooxygenase antibody MGC133529 antibody Microsomal monooxygenase antibody OTTHUMP00000020813 antibody OTTHUMP00000046571 antibody P450 ALC antibody P450-J antibody P450C2E antibody P450J antibody P450RLM6 antibody Xenobiotic monooxygenase antibody
Accession No.	Swiss-Prot#:P05181
Calculated MW	57 kDa
Formulation	1*TBS (pH7.4), 1%BSA, 40%Glycerol. Preservative: 0.05% Sodium Azide.
Storage	Store at -20°C

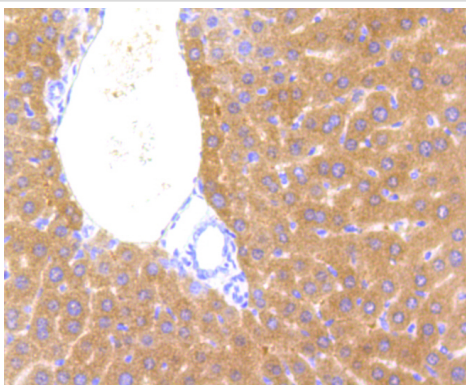
Application Details

WB: 1:1000 IHC: 1:50-1:200ICC: 1:50-1:200

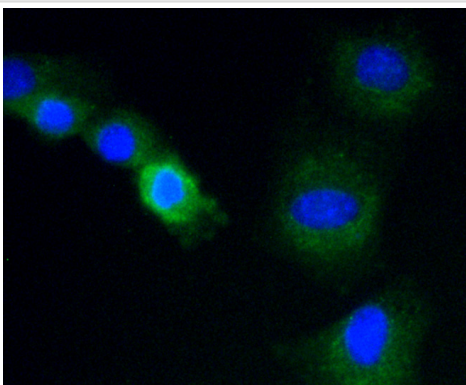
Images



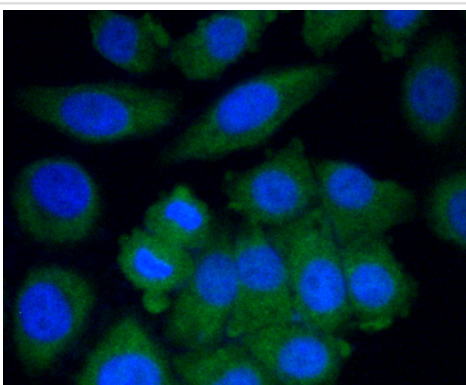
Western blot analysis of Cytochrome P450 2E1 on different lysates using anti-Cytochrome P450 2E1 antibody at 1/1000 dilution.  
Positive control 1/200 1/2 Lane 1: MCF-7 Lane 2: NIH-3T3 Lane 3: Mouse kidney tissue Lane 4: siHa



Immunohistochemical analysis of paraffin-embedded mouse liver tissue using anti-Cytochrome P450 2E1 antibody. Counter stained with hematoxylin.



ICC staining Cytochrome P450 2E1 in C2C12 cells (green). The nuclear counter stain is DAPI (blue). Cells were fixed in paraformaldehyde, permeabilised with 0.25% Triton X100/PBS.



ICC staining Cytochrome P450 2E1 in HepG2 cells (green). The nuclear counter stain is DAPI (blue). Cells were fixed in paraformaldehyde, permeabilised with 0.25% Triton X100/PBS.

## Background

Metabolizes several precarcinogens, drugs, and solvents to reactive metabolites. Inactivates a number of drugs and xenobiotics and also bioactivates many xenobiotic substrates to their hepatotoxic or carcinogenic forms.

## References

1. Uehara S et al. Functional characterization and tissue expression of marmoset cytochrome P450 2E1. *Biopharm Drug Dispos* doi: 10.1002/bdd.2080 (2017).
2. Scheving LA et al. Hepatocyte ERBB3 and EGFR are required for maximal CCl4-induced liver fibrosis. *Am J Physiol Gastrointest Liver Physiol* 311:G807-G816 (2016).

## Published Papers

el at., DDAH1 Protects against Acetaminophen-Induced Liver Hepatotoxicity in Mice . In *Antioxidants (Basel)* on 2022 Apr 29 by Xiyue Shen, Saddam Muhammad Ishaq, et al..PMID:35624743, , (2022)  
[PMID:35624743](#)

---

Note: This product is for in vitro research use only and is not intended for use in humans or animals.