

Beta-Actin Antibody

Catalog No: #48485



Package Size: #48485-1 50ul #48485-2 100ul

Orders: order@signalwayantibody.com

Support: tech@signalwayantibody.com

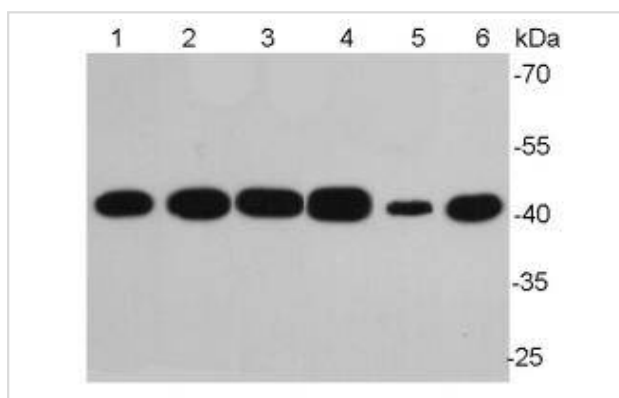
Description

Product Name	Beta-Actin Antibody
Host Species	Mouse
Clonality	Monoclonal
Clone No.	A2-F6
Purification	ProA affinity purified
Applications	WB, ICC, IHC, FC
Species Reactivity	Human;Mouse;Rat
Immunogen Description	Synthetic peptide (KLH-coupled) within human Beta-actin N terminal.
Conjugates	Unconjugated
Other Names	A26C1A antibody A26C1B antibody ACTB antibody ACTB_HUMAN antibody Actin beta antibody Actin cytoplasmic 1 antibody Actin, cytoplasmic 1, N-terminally processed antibody Actx antibody b actin antibody Beta cytoskeletal actin antibody Beta-actin antibody BRWS1 antibody E430023M04Rik antibody MGC128179 antibody PS1TP5 binding protein 1 antibody PS1TP5BP1 antibody
Accession No.	Swiss-Prot#:P60709
Calculated MW	42kDa
Formulation	1*TBS (pH7.4), 1%BSA, 40%Glycerol. Preservative: 0.05% Sodium Azide.
Storage	Store at -20°C

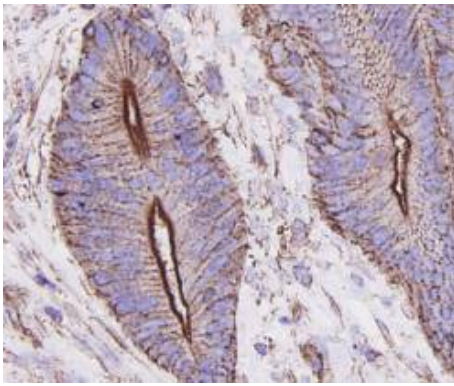
Application Details

WB: 1:10,000 IHC: 1:100-1:200 ICC: 1:100-1:200 FC: 1:100-1:200

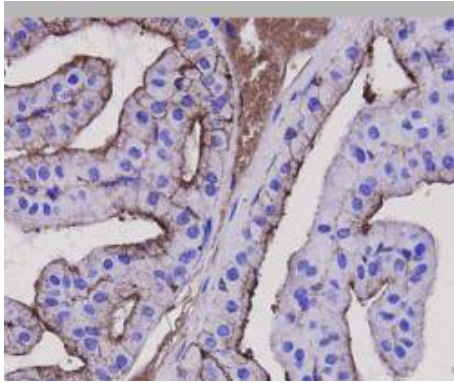
Images



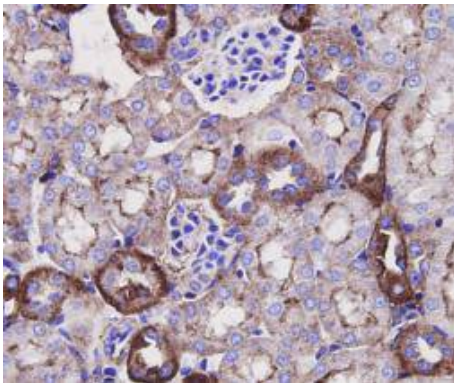
Western blot analysis of Beta-actin on different lysates using anti-Beta-actin antibody at 1/10,000 dilution. Positive control: Lane 1: NIH/3T3
 Lane 2: PC12 Lane 3: MCF-7 Lane 4: HepG2 Lane 5: Hela Lane 6: Mouse lung



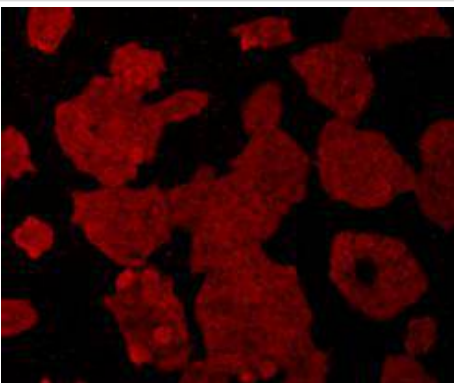
Immunohistochemical analysis of paraffin-embedded human colon carcinoma tissue using anti-Beta-actin antibody. Counter stained with hematoxylin.



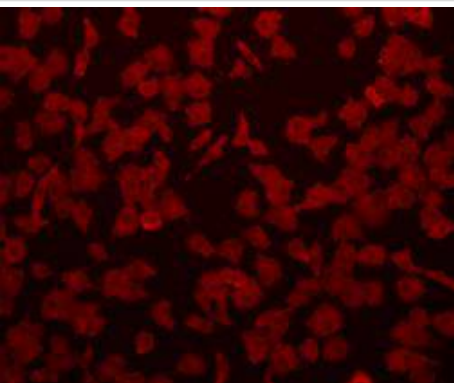
Immunohistochemical analysis of paraffin-embedded mouse prostate tissue using anti-Beta-actin antibody. Counter stained with hematoxylin.



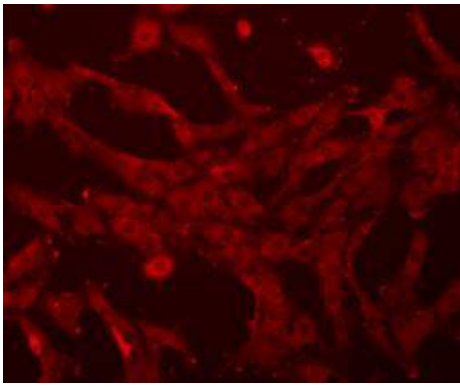
Immunohistochemical analysis of paraffin-embedded mouse kidney tissue using anti-Beta-actin antibody. Counter stained with hematoxylin.



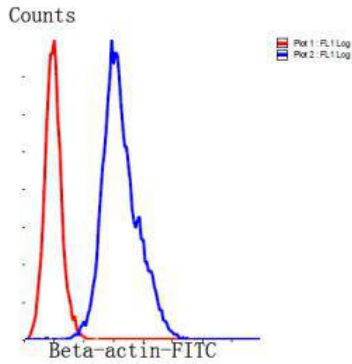
ICC staining of Beta-actin in Hela cells (red). Cells were fixed in paraformaldehyde, permeabilised with 0.25% Triton X100/PBS.



ICC staining of Beta-actin in A549 cells (red). Cells were fixed in paraformaldehyde, permeabilised with 0.25% Triton X100/PBS.



ICC staining of Beta-actin in NIH-3T3 cells (red). Cells were fixed in paraformaldehyde, permeabilised with 0.25% Triton X100/PBS.



Flow cytometric analysis of HeLa cells with Beta-actin antibody at 1/100 dilution (blue) compared with an unlabelled control (cells without incubation with primary antibody; red). Goat anti mouse IgG (FITC) was used as the secondary antibody.

Background

Beta actin also known as Cytoplasmic Actin is a 42 kDa, highly conserved protein, ubiquitously expressed in all eukaryotic cells. They comprise, along with microtubules, a major component of the cytoskeleton. β -Actin is a relatively stable cytoskeletal protein normally at a constant level in cells, regardless of experimental treatment or technical procedure. For this reason, measurement of β -Actin is generally used as an internal control for experimental error.

References

1. Fujiki R et al. GlcNAcylation of a histone methyltransferase in retinoic-acid-induced granulopoiesis. *Nature* 459:455-459 (2009).
2. Fujiki R et al. Retraction: GlcNAcylation of a histone methyltransferase in retinoic-acid-induced granulopoiesis. *Nature* 505:574-574 (2014).

Note: This product is for in vitro research use only and is not intended for use in humans or animals.