

## sfGFP Antibody

Catalog No: #48545



Package Size: #48545-1 50ul #48545-2 100ul

Orders: [order@signalwayantibody.com](mailto:order@signalwayantibody.com)Support: [tech@signalwayantibody.com](mailto:tech@signalwayantibody.com)

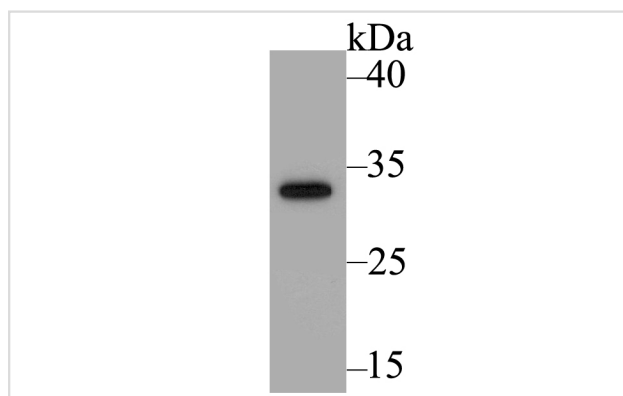
## Description

Product Name	sfGFP Antibody
Purification	Peptide affinity purified.
Applications	WB
Immunogen Description	Synthetic peptide RDHMLVHEYVNAAGITC linked to KLH.
Conjugates	Unconjugated
Formulation	1*PBS (pH7.4), 0.2% BSA, 50% Glycerol. Preservative: 0.05% Sodium Azide.
Storage	Store at +4°C after thawing. Aliquot store at -20°C. Avoid repeated freeze / thaw cycles.

## Application Details

WB: 1:1,000

## Images



Western blot analysis of GFP11-tag on fusion protein using anti-GFP11-tag antibody at 1/1,000 dilution.

## Background

Tagging proteins with a functional sequence is a powerful way to access function, and inserting tags at endogenous genomic loci allows the preservation of a near-native cellular background. GFP11 is the 11th beta-strand of the superfolder GFP beta-barrel structure. When expressed in the same cell, GFP11 and its complementary GFP fragment (GFP1-10) enable functional GFP tagging upon complementation. The key advantage of the GFP11 is its small size (16 aa): this allows commercial ssDNA oligomers to be used as HDR donors, circumventing any requirement for molecular cloning.

## References

1. Leonetti MD et al. A scalable strategy for high-throughput GFP tagging of endogenous human proteins. *Proc Natl Acad Sci USA* 113(25):E3501-8 (2016).

## Published Papers

---

et al., Enhancing mitochondrial proteolysis alleviates alpha-synuclein-mediated cellular toxicity. In NPJ Parkinsons Dis on 2024 Jun 21

by Xi Zhang, Linhao Ruan, et al.. PMID:38906862, , (2024)

[PMID:38906862](#)

---

---

Note: This product is for in vitro research use only and is not intended for use in humans or animals.