

## LRP1 Rabbit mAb

Catalog No: #48595

Package Size: #48595-1 50ul #48595-2 100ul

Orders: [order@signalwayantibody.com](mailto:order@signalwayantibody.com)Support: [tech@signalwayantibody.com](mailto:tech@signalwayantibody.com)

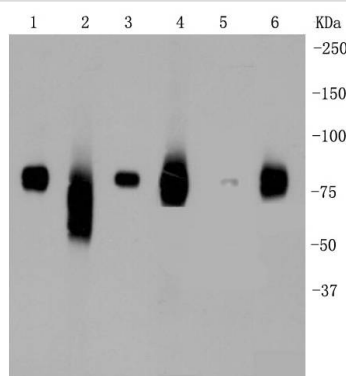
## Description

Product Name	LRP1 Rabbit mAb
Host Species	Recombinant Rabbit
Clonality	Monoclonal antibody
Clone No.	SA0290
Purification	ProA affinity purified
Applications	WB, ICC/IF, IHC, IP, FC
Species Reactivity	Human;Mouse;Rat
Immunogen Description	recombinant protein
Conjugates	Unconjugated
Other Names	A2MR antibody Alpha 2 macroglobulin receptor antibody alpha 2MR antibody Alpha-2-macroglobulin receptor antibody APOER antibody Apolipoprotein E receptor antibody APR antibody CD 91 antibody CD91 antibody CD91 antigen antibody IGFBP3R antibody LDL receptor related protein 1 antibody Low density lipoprotein receptor related protein 1 antibody Low density lipoprotein related protein 1 antibody Low-density lipoprotein receptor-related protein 1 intracellular domain antibody LRP 1 antibody LRP 515 antibody LRP 85 antibody LRP antibody LRP ICD antibody LRP-1 antibody LRP-515 antibody LRP-85 antibody Lrp1 antibody LRP1 protein antibody LRP1_HUMAN antibody LRP1A antibody LRP515 antibody LRP85 antibody LRPICD antibody MGC88725 antibody Prolow density lipoprotein receptor related protein 1 antibody TbetaR V/LRP 1/IGFBP 3 receptor antibody TbetaRV/LRP1/IGFBP3 receptor antibody TGFBR 5 antibody TGFBR5 antibody Type V tgf beta receptor antibody
Accession No.	Swiss-Prot#:Q07954
Calculated MW	85 kDa
Formulation	1*TBS (pH7.4), 1%BSA, 40%Glycerol. Preservative: 0.05% Sodium Azide.
Storage	Store at -20°C

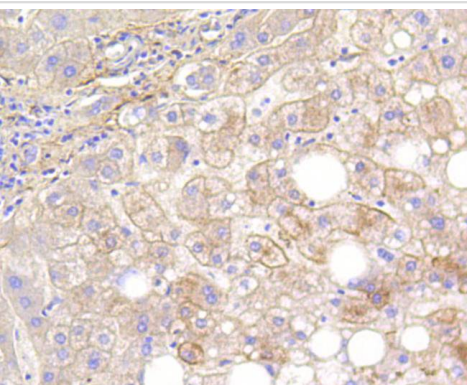
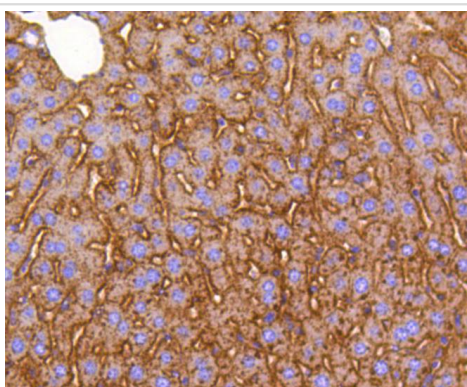
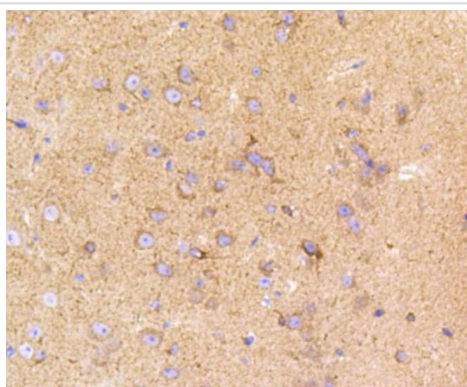
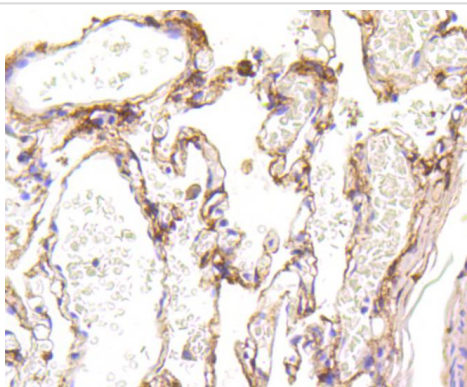
## Application Details

WB: 1:1,000-5,000IHC: 1:50-1:200 ICC: 1:50-1:200FC: 1:10-1:100

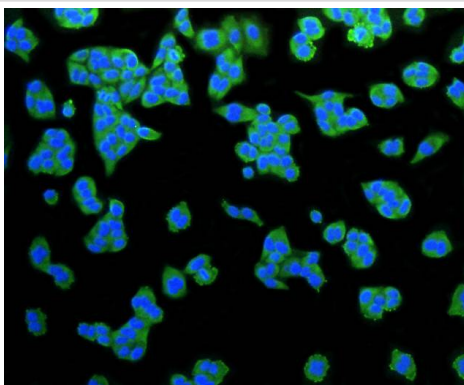
## Images



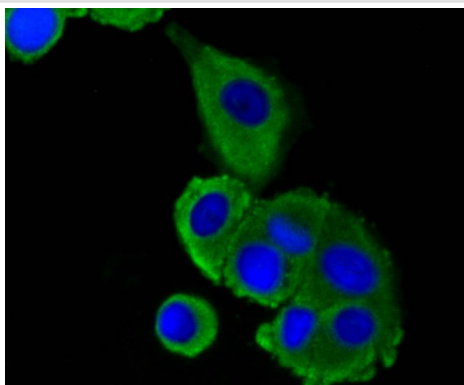
Western blot analysis of LRP1 on different lysates using anti-LRP1 antibody at 1/1,000 dilution. Positive control: Lane 1: Mouse liver Lane 2: Mouse brain Lane 3: Mouse lung Lane 4: Human liver Lane 5: HepG2 Lane 6: Human lung



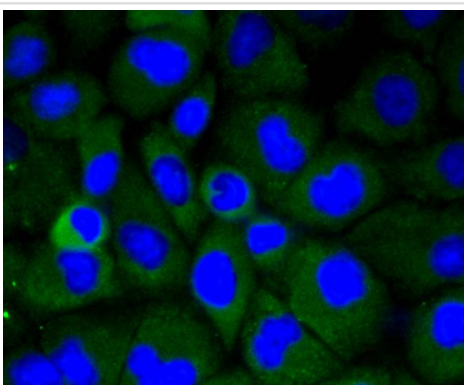
Immunohistochemical analysis of paraffin-embedded human lung tissue using anti-LRP1 antibody. Counter stained with hematoxylin.



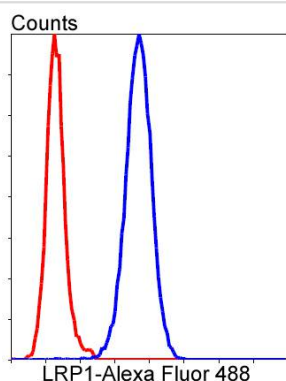
ICC staining LRP1 in HeLa cells (green). The nuclear counter stain is DAPI (blue). Cells were fixed in paraformaldehyde, permeabilised with 0.25% Triton X100/PBS..



ICC staining LRP1 in MCF-7 cells (green). The nuclear counter stain is DAPI (blue). Cells were fixed in paraformaldehyde, permeabilised with 0.25% Triton X100/PBS.



ICC staining LRP1 in HUVEC cells (green). Cells were fixed in paraformaldehyde, permeabilised with 0.25% Triton X100/PBS.



Flow cytometric analysis of HeLa cells with LRP1 antibody at 1/50 dilution (blue) compared with an unlabelled control (cells without incubation with primary antibody; red). Alexa Fluor 488-conjugated goat anti-rabbit IgG was used as the secondary antibody.

## Background

Members of the LDL receptor gene family, including LDLR (low density lipoprotein receptor), LRP1 (low density lipoprotein related protein), Megalin (also designated GP330), VLDLR (very low density lipoprotein receptor) and ApoER2 are characterized by a cluster of cysteine-rich class A repeats, epidermal growth factor (EGF)-like repeats, YWTD repeats and an O-linked sugar domain. LRP1, also designated LRP and  $\alpha$ -2-Macroglobulin receptor, is an endocytic receptor that mediates the uptake of at least 15 ligands, including  $\alpha$ -2-Macroglobulin and apoE. LRP1 is cleaved into a membrane subunit and an extracellular subunit, which remain non-covalently associated. Proper folding and trafficking of LRP1 is facilitated by the receptor-associated protein (RAP), a molecular chaperone. The uptake of all known ligands through LRP1 can be blocked by RAP, which induces a conformational change in the receptor that renders it unable to bind ligands. LRP1, which is expressed in brain, liver and lung, is also implicated in

Alzheimer's disease (AD), as the human LRP gene localizes to a potential AD locus on chromosome 12.

## References

1. Fernandez-Castaneda, A. et al. 2013. Identification of the low density lipoprotein (LDL) receptor-related protein-1 interactome in central nervous system myelin suggests a role in the clearance of necrotic cell debris. J. Biol. Chem. 288: 4538-4548.
2. Yahiro, K. et al. 2012. Low-density lipoprotein receptor-related protein-1 (LRP1) mediates autophagy and apoptosis caused by Helicobacter pylori VacA. J. Biol. Chem. 287: 31104-31115.

## Published Papers

et al., Lactotransferrin Downregulation Drives the Metastatic Progression in Clear Cell Renal Cell Carcinoma. In Cancers (Basel) on 2020 Mar 31 by I-Jen Chiu, Yung-Ho Hsu, et al..PMID: 32244557, , (2020)

[PMID:32244557](#)

Youzhi Ning;Yue Zhang;Tao Jiang;Jianguo Feng;Jian Zhan;Cehua Ou;Lu Wang et al., LRP1-mediated p-tau propagation contributes to cognitive impairment after chronic neuropathic pain in rats., , (2025)

[PMID:39674403](#)

**Note:** This product is for in vitro research use only and is not intended for use in humans or animals.