

## Cyclin D1 Rabbit mAb

Catalog No: #48619



Package Size: #48619-1 50ul #48619-2 100ul

Orders: [order@signalwayantibody.com](mailto:order@signalwayantibody.com)Support: [tech@signalwayantibody.com](mailto:tech@signalwayantibody.com)

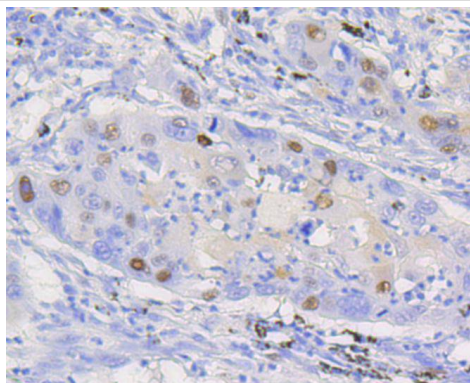
## Description

Product Name	Cyclin D1 Rabbit mAb
Host Species	Recombinant Rabbit
Clonality	Monoclonal antibody
Clone No.	SA38-08
Purification	ProA affinity purified
Applications	WB, ICC/IF, IHC, IP
Species Reactivity	Human;Mouse;Rat
Immunogen Description	recombinant protein
Conjugates	Unconjugated
Other Names	AI327039 antibody B cell CLL/lymphoma 1 antibody B cell leukemia 1 antibody B cell lymphoma 1 protein antibody B-cell lymphoma 1 protein antibody BCL 1 antibody BCL-1 antibody BCL-1 oncogene antibody BCL1 antibody BCL1 oncogene antibody ccnd1 antibody CCND1/FSTL3 fusion gene, included antibody CCND1/IGHG1 fusion gene, included antibody CCND1/IGLC1 fusion gene, included antibody CCND1/PTH fusion gene, included antibody CCND1_HUMAN antibody cD1 antibody Cyl 1 antibody D11S287E antibody G1/S specific cyclin D1 antibody G1/S-specific cyclin-D1 antibody Parathyroid adenomatosis 1 antibody PRAD1 antibody PRAD1 oncogene antibody U21B31 antibody
Accession No.	Swiss-Prot#:P24385
Calculated MW	34 kDa
SDS-PAGE MW	36 kDa
Formulation	1*TBS (pH7.4), 1%BSA, 40%Glycerol. Preservative: 0.05% Sodium Azide.
Storage	Store at -20°C

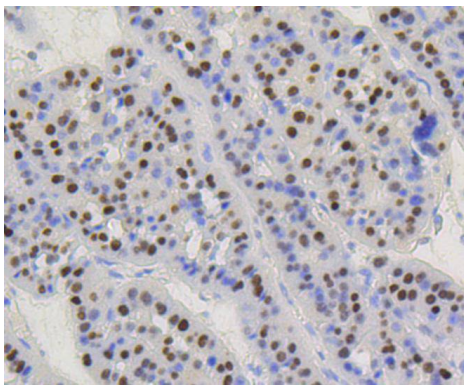
## Application Details

WB: 1:1,000-5,000IHC: 1:50-1:200ICC: 1:50-1:200

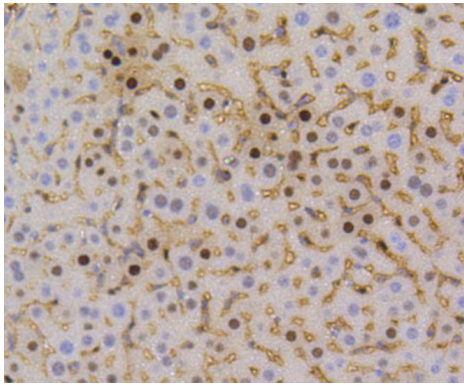
## Images



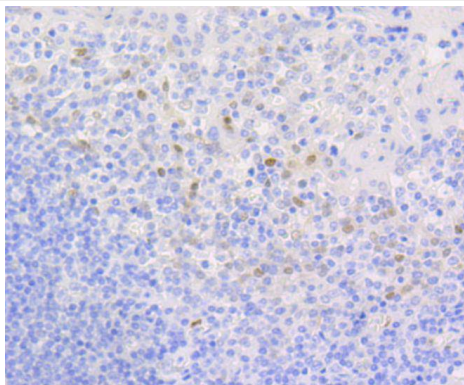
Immunohistochemical analysis of paraffin-embedded human lung carcinoma tissue using anti-Cyclin D1 antibody. Counter stained with hematoxylin.



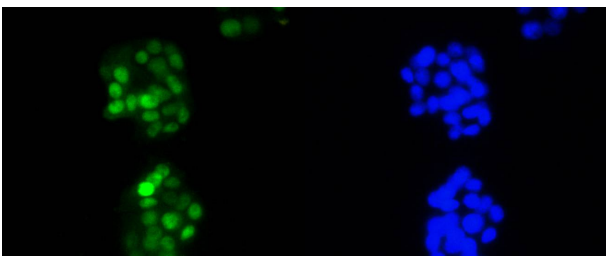
Immunohistochemical analysis of paraffin-embedded human liver carcinoma tissue using anti-Cyclin D1 antibody. Counter stained with hematoxylin.



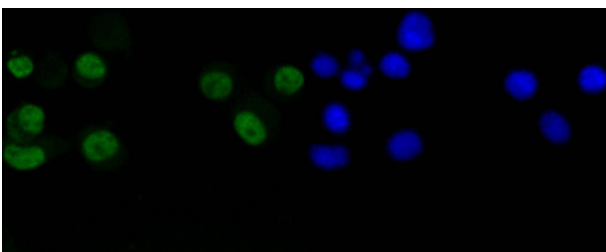
Immunohistochemical analysis of paraffin-embedded mouse liver tissue using anti-Cyclin D1 antibody. Counter stained with hematoxylin.



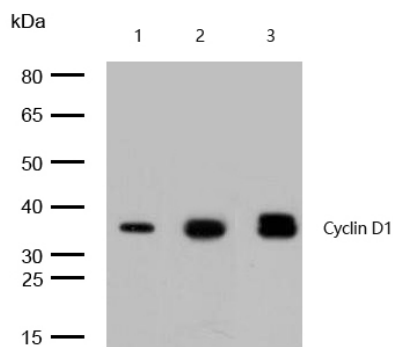
Immunohistochemical analysis of paraffin-embedded human tonsil tissue using anti-Cyclin D1 antibody. Counter stained with hematoxylin.



ICC staining Cyclin D1 in PC-12 cells (green). The nuclear counter stain is DAPI (blue). Cells were fixed in paraformaldehyde, permeabilised with 0.25% Triton X100/PBS.



ICC staining Cyclin D1 in N2A cells (green). The nuclear counter stain is DAPI (blue). Cells were fixed in paraformaldehyde, permeabilised with 0.25% Triton X100/PBS.



All lanes: Cyclin D1 Rabbit mAb at 1/1k dilution

Lane 1 : HeLa whole cell lysates

Lane 2 : PC12 whole cell lysates  
Lane 3 : SH-SY5Y whole cell lysates

Lysates/proteins at 20 µg per lane.

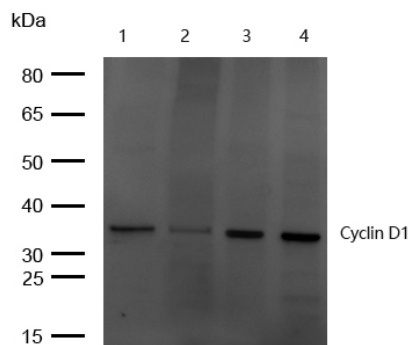
Secondary

All lanes : Goat Anti-Rabbit IgG H&L (HRP) at 1/20000 dilution

Predicted band size: 34 kDa

Observed band size: 36 kDa

Exposure time: 4 seconds



All lanes: Cyclin D1 Rabbit mAb at 1/1k dilution

Lane 1 : Rat kidney lysates

Lane 2 : Rat lung lysates  
Lane 3 : Mouse kidney lysates  
Lane 4 : Mouse lung lysates

Lysates/proteins at 20 µg per lane.

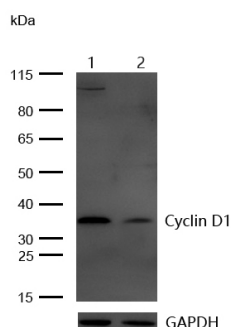
Secondary

All lanes : Goat Anti-Rabbit IgG H&L (HRP) at 1/20000 dilution

Predicted band size: 34 kDa

Observed band size: 36 kDa

Exposure time: 8 seconds



All lanes: Cyclin D1 Rabbit mAb at 1/1k dilution

Lane 1 : Wild-type HeLa cell lysate

Lane 2 : Cyclin D1 knockdown HeLa cell lysate

Lysates/proteins at 20 µg per lane.

## Background

The proliferation of eukaryotic cells is controlled at specific points in the cell cycle, particularly at the G1 to S and the G2 to M transitions. It is well established that the Cdc2 p34-cyclin B protein kinase plays a critical role in the G2 to M transition while cyclin A associates with Cdk2 p33 and functions in S phase. Considerable effort directed towards the identification of G1 cyclins has led to the isolation of cyclin D, cyclin C and cyclin E. Of these, cyclin D corresponds to a putative human oncogene, designated PRAD1, which maps at the site of the Bcl1 rearrangement in certain lymphomas and leukemias. Two additional human type D cyclins, as well as their mouse homologs, have been identified. Evidence has established that members of the cyclin D family function to regulate phosphorylation of the retinoblastoma gene product, thereby activating E2F transcription factors.

## References

1. Totta, P. et al. 2015. Clathrin heavy chain interacts with estrogen receptor  $\alpha$  and modulates 17 $\beta$ -estradiol signaling. Molecular endocrinology (Baltimore, Md.). : me20141385.
2. Luo, Y. et al. 2015. Lycorine induces programmed necrosis in the multiple myeloma cell line ARH-77. Tumour biology : the journal of the

## Published Papers

---

et al., Long non-coding RNA TRIM52-AS1 sponges microRNA-577 to facilitate diffuse large B cell lymphoma progression via increasing TRIM52 expression. In Hum Cell

on 2022 Jul by Fang Zhao, Shucheng Li, et al.. PMID:35676608, , (2022)

[PMID:35676608](#)

---

---

Note: This product is for in vitro research use only and is not intended for use in humans or animals.